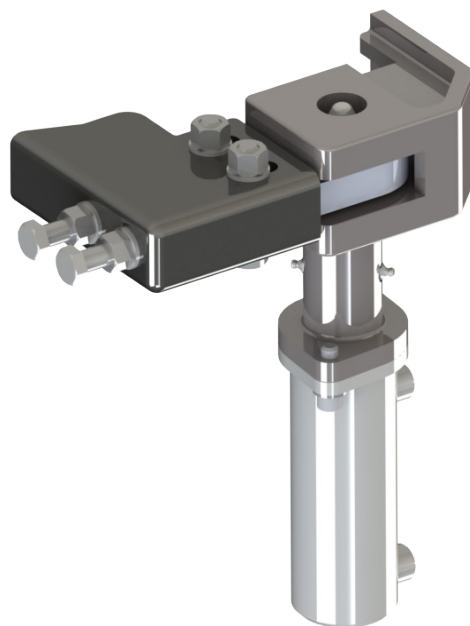


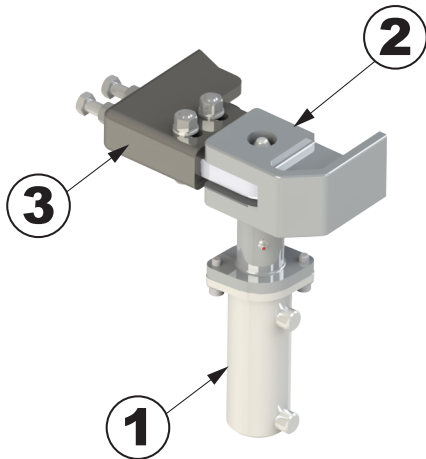


TECHNICAL SHEET



**REAR DOOR HYDRAULIC
CLOSING CLAMPS**

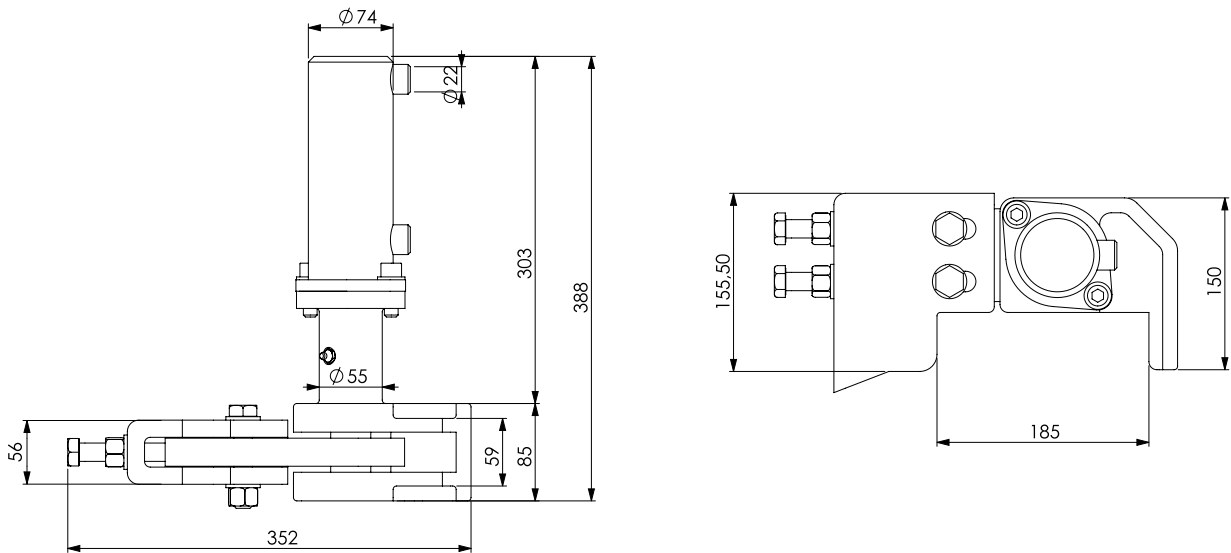
Description



HYDRAULIC SAFETY REAR DOOR CLOSING CLAMPS

Rear doors made of carbon steel or stainless steel industrial closing clamps with hydraulic cylinders (1), welding support (2), adjustable clamp (3) and fitting pin. Designed to be used for carrying dangerous material inside vacuum and pressure tanks, from 0 to 4 Bar - 0 to 58 psi working pressure.

Dimensions



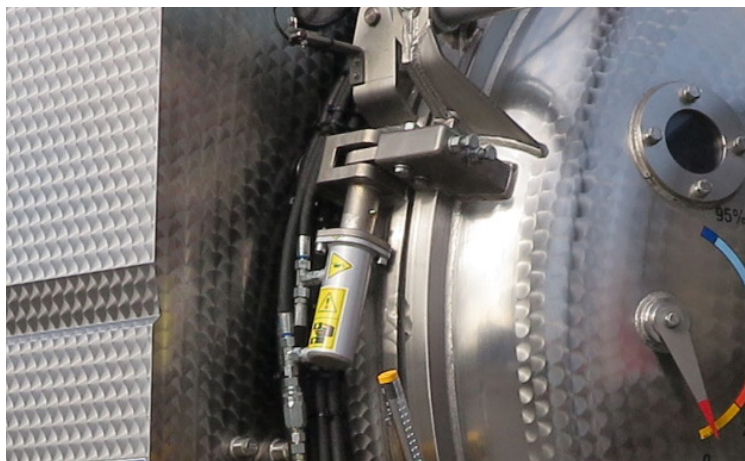
Technical data

Mechanical resistance	237.820 N
Working pressure	170 bar
Weight	21 kg

Versions

description	code
Left carbon steel closing clamps	6.830002790-1C
Right carbon steel closing clamps	6.830002780-1C
Left stainless steel closing clamps	6.830002810-1C
Right stainless steel closing clamps	6.830002800-1C

Examples of application





MORO KAISER **COMPONENTS**

MORO KAISER S.R.L.

Via Pontebbana, 16
33080 FIUME VENETO (PN) ITALY

Tel. 0434 951.211

Fax: 0434 957.786

infomoro@morokaiser.it