



Pratissoli

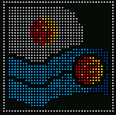
Positive displacement reciprocating pumps

HY-PACK units

HYDRAULIC POWERED PUMPS



**INTERPUMP
GROUP**



Pratissoli

HY-PACK units

Taking advantages of the association with global leaders in the hydraulic component industry we are proud to offer a complete line of pump and motor combinations for mobile applications.

These "plug and play" packages drastically reduce assembly cost while conserving much needed weight and space with their compact footprint.



INTERPUMP GROUP



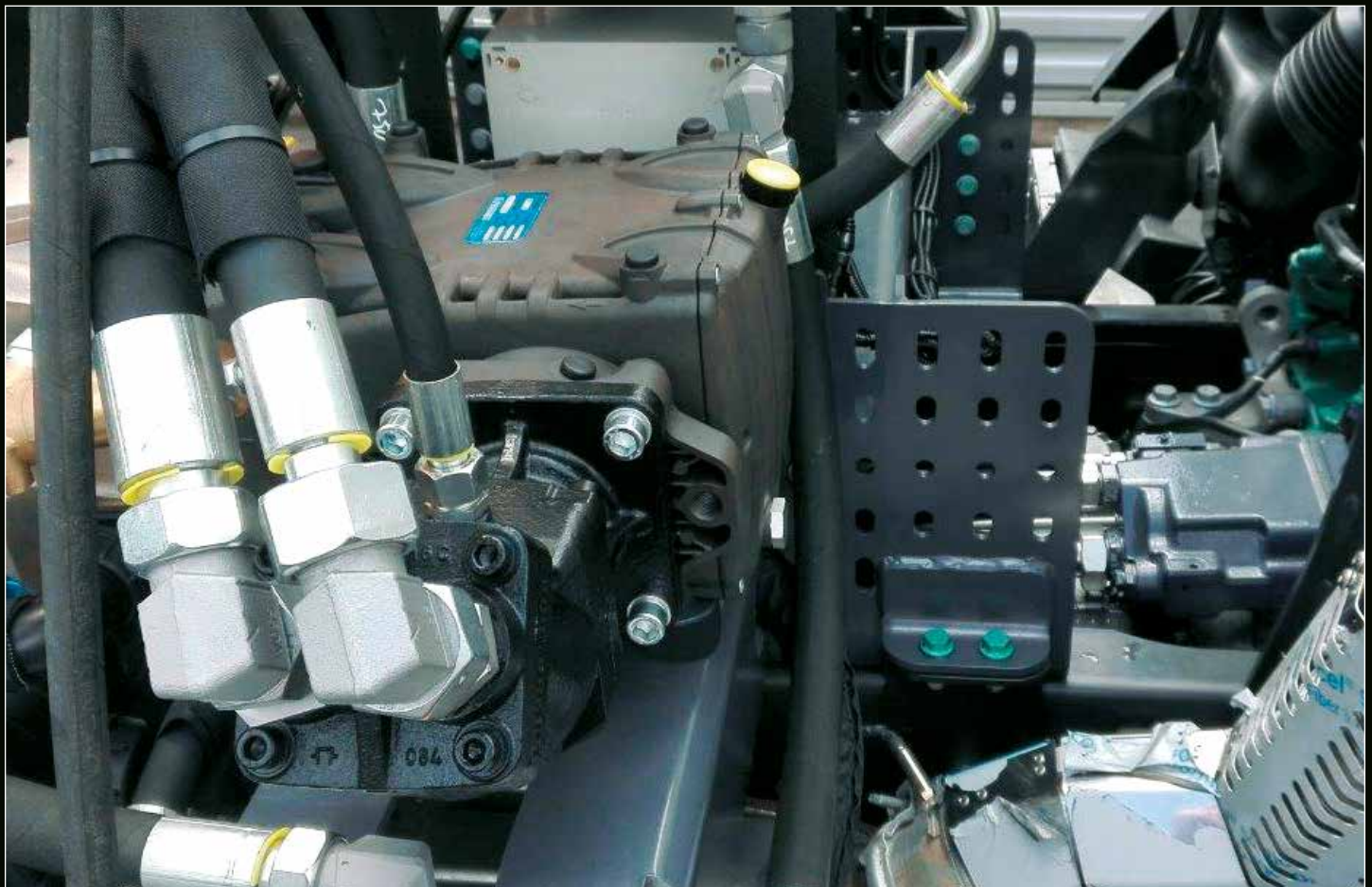
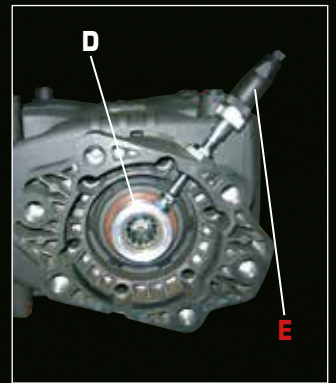
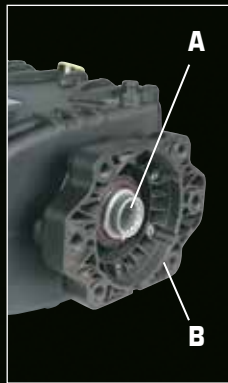
Supply:

A selection of piston, gear and orbital motors to choose from to fit all torques up to 590 Nm and match with any pump from 25 to 180 HP.

The HY-PACK's are supplied fully assembled ready to work, configurable to Customer specs thanks to a comprehensive range of options.



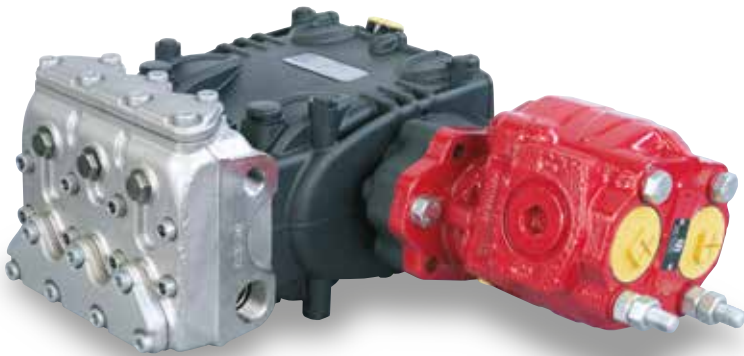
STANDARD	A	SPLINED SHAFT, 13/14 teeth
	B	SAE flange B/C 2-4 holes
	C	Hydraulic motor GEAR/PISTON/ORB.
	D	Dual use rpm ring optical/proximity
OPTIONAL	E	ZRPM proximity sensor



KE series

25HP

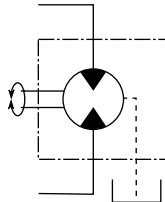
HY-PACK



Gear 48 cc.

Mod.	Volume		Pressure		Speed r.p.m.	Oil volume		Oil press.		Ordering Code
	L/min	Gpm	bar	p.s.i.		L/min	Gpm	bar	p.s.i.	
KE 20	30	7.9	300	4350	1450	70	18.4	190	2760	KE0020I H001
KE 22	37	9.8	250	3630	1450	70	18.4	190	2760	KE0022I H001
KE 24	45	11.9	210	3050	1450	70	18.4	190	2760	KE0024I H001
KE 28 H	61	16.1	150	2180	1450	70	18.4	180	2610	KE0028I H001
KE 30 H	70	18.5	130	1890	1450	70	18.4	180	2610	KE0030I H001
KE 36 H	100	26.4	100	1450	1450	70	18.4	200	2900	KE0036I H001

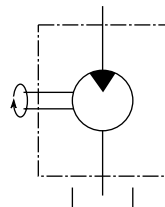
Motor comes standard on the right (see picture).
Add S after I when ordering motor on the left: i.e.KE0020IS H001
Replace first O after H with 2 if NPT pump. i.e.KE0020IS H201



Piston 64 cc.

Mod.	Volume		Pressure		Speed r.p.m.	Oil volume		Oil press.		Ordering Code
	L/min	Gpm	bar	p.s.i.		L/min	Gpm	bar	p.s.i.	
KE 20	30	7.9	300	4350	1450	93	24.5	140	2030	KE0020I H002
KE 22	37	9.8	250	3630	1450	93	24.5	140	2030	KE0022I H002
KE 24	45	11.9	210	3050	1450	93	24.5	140	2030	KE0024I H002
KE 28 H	61	16.1	150	2180	1450	93	24.5	140	2030	KE0028I H002
KE 30 H	70	18.5	130	1890	1450	93	24.5	140	2030	KE0030I H002
KE 36 H	100	26.4	100	1450	1450	93	24.5	150	2180	KE0036I H002

Motor comes standard on the right (see picture).
Add S after I when ordering motor on the left: i.e.KE0020IS H002
Replace first O after H with 2 if NPT pump. i.e.KE0020IS H202



ZRPM1 Revolution counter

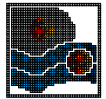


	Power supply	Ordering Code
Inductive proximity sensor, c/w female connector M12, 4 pin, IP67, field attachable, and ring nut reduction M18 x 1	12/24 VDC	ZRPM1

KTLP series

35HP

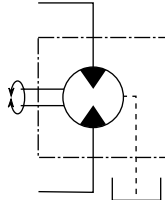
HY-PACK



Gear 48 cc.

Mod.	Volume		Pressure		Speed	Oil volume		Oil press.		Ordering Code
	L/min	Gpm	bar	p.s.i.	r.p.m.	L/min	Gpm	bar	p.s.i.	
KT 24	51	13.5	250	3635	1450	70	18.4	250	3630	KT0024I H001
KT 28	70	18.4	200	2900	1450	70	18.4	270	3920	KT0028I H001
KT 30	80	21.1	175	2540	1450	70	18.4	280	4060	KT0030I H001
KT 32	91	24.0	150	2180	1450	70	18.4	270	3920	KT0032I H001
KT 36	115	30.4	120	1740	1450	70	18.4	270	3920	KT0036I H001
KT 40	142	37.5	100	1450	1450	70	18.4	280	4060	KT0040I H001
KT 24	62	16.3	200	2900	1750	84	22.2	200	2900	KT0024I H001
KT 28	84	22.2	175	2540	1750	84	22.2	240	3480	KT0028I H001
KT 30	96	25.5	140	2030	1750	84	22.2	220	3190	KT0030I H001
KT 36	125	33.1	125	1820	1580	76	20.0	280	4060	KT0036I H001

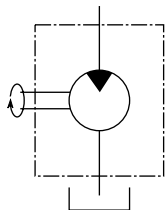
Motor comes standard on the right (see picture).
Add S after I when ordering motor on the left: i.e. KT0024IS H001
Replace first O after H with 2 if NPT pump. i.e. KT0024IS H201



Piston 64 cc.

Mod.	Volume		Pressure		Speed	Oil volume		Oil press.		Ordering Code
	L/min	Gpm	bar	p.s.i.	r.p.m.	L/min	Gpm	bar	p.s.i.	
KT 24	51	13.5	250	3630	1450	93	24.5	190	2760	KT0024I H002
KT 28	70	18.4	200	2900	1450	93	24.5	210	3050	KT0028I H002
KT 30	80	21.1	175	2540	1450	93	24.5	210	3050	KT0030I H002
KT 32	91	24.0	150	2180	1450	93	24.5	200	2900	KT0032I H002
KT 36	115	30.4	120	1740	1450	93	24.5	210	3050	KT0036I H002
KT 40	142	37.5	100	1450	1450	93	24.5	210	3050	KT0040I H002
KT 24	62	16.3	200	2900	1750	112	29.6	150	2180	KT0024I H002
KT 28	84	22.2	175	2540	1750	112	29.6	180	2610	KT0028I H002
KT 30	96	25.5	140	2030	1750	112	29.6	170	2470	KT0030I H002
KT 36	125	33.1	125	1820	1580	101	26.7	210	3050	KT0036I H002

Motor comes standard on the right (see picture).
Add S after I when ordering motor on the left: i.e. KT0024IS H002
Replace first O after H with 2 if NPT pump.: i.e. KT0024IS H202



ZRPM1 Revolution counter

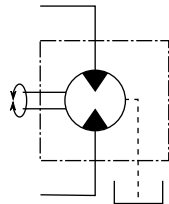
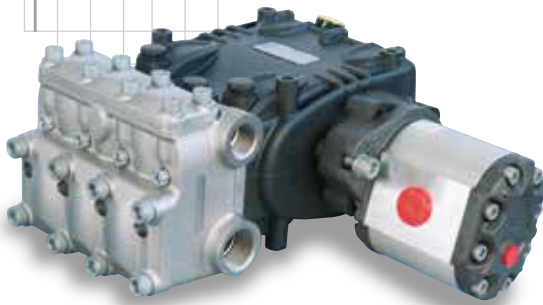


	Power supply	Ordering Code
Inductive proximity sensor, c/w female connector M12, 4 pin, IP67, field attachable, and ring nut reduction M18 x 1	12/24 VDC	ZRPM1

KTLP series

35HP

HY-PACK



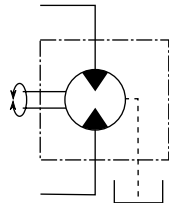
Motor comes standard on the right (see picture).
Add S after I when ordering motor on the left: i.e.KT0024IS H003
Replace first O after H with 2 if NPT pump. i.e.KT0024IS H203

Gear 53 cc.

Mod.	Volume		Pressure		Speed r.p.m.	Oil volume		Oil press.		Code
	L/min	Gpm	bar	p.s.i.		L/min	Gpm	bar	p.s.i.	
KT 24	51	13.5	230	3340	1450	77	20.3	210	3050	KT0024I H003
KT 28	70	18.4	170	2470	1450	77	20.3	210	3050	KT0028I H003
KT 30	80	21.1	145	2110	1450	77	20.3	210	3050	KT0030I H003
KT 32	91	24.0	130	1890	1450	77	20.3	210	3050	KT0032I H003
KT 36	115	30.4	100	1450	1450	77	20.3	210	3050	KT0036I H003
KT 40	142	37.5	80	1160	1450	77	20.3	200	2900	KT0040I H003
KT 24	62	16.3	200	2900	1750	93	24.5	180	2610	KT0024I H004
KT 28	84	22.2	170	2470	1750	93	24.5	210	3050	KT0028I H004
KT 30	96	25.5	140	2030	1750	93	24.5	200	2900	KT0030I H004
KT 36	125	33.1	100	1450	1580	84	22.1	210	3050	KT0036I H004

Gear 62 cc.

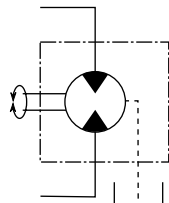
Mod.	Volume		Pressure		Speed r.p.m.	Oil volume		Oil press.		Code
	L/min	Gpm	bar	p.s.i.		L/min	Gpm	bar	p.s.i.	
KT 24	51	13.5	245	3560	1450	90	23.8	190	2760	KT0024I H004
KT 28	70	18.4	180	2610	1450	90	23.8	190	2760	KT0028I H004
KT 30	80	21.1	155	2250	1450	90	23.8	190	2760	KT0030I H004
KT 32	91	24.0	135	1960	1450	90	23.8	190	2760	KT0032I H004
KT 36	115	30.4	110	1600	1450	90	23.8	190	2760	KT0036I H004
KT 40	142	37.5	85	1240	1450	90	23.8	190	2760	KT0040I H004
KT 24	62	16.3	200	2900	1750	109	28.7	160	2320	KT0024I H004
KT 28	84	22.2	170	2470	1750	109	28.7	180	2610	KT0028I H004
KT 30	96	25.5	140	2030	1750	109	28.7	170	2470	KT0030I H004
KT 36	125	33.1	110	1600	1580	98	25.9	190	2760	KT0036I H004



Motor comes standard on the right (see picture).
Add S after I when ordering motor on the left: i.e.KT0024IS H004
Replace first O after H with 2 if NPT pump. i.e.KT0024IS H204

Gear 70 cc.

Mod.	Volume		Pressure		Speed r.p.m.	Oil volume		Oil press.		Code
	L/min	Gpm	bar	p.s.i.		L/min	Gpm	bar	p.s.i.	
KT 24	51	13.5	250	3630	1450	102	26.8	170	2470	KT0024I H005
KT 28	70	18.4	190	2760	1450	102	26.8	180	2610	KT0028I H005
KT 30	80	21.1	165	2400	1450	102	26.8	180	2610	KT0030I H005
KT 32	91	24.0	145	2110	1450	102	26.8	180	2610	KT0032I H005
KT 36	115	30.4	115	1670	1450	102	26.8	180	2610	KT0036I H005
KT 40	142	37.5	95	1380	1450	102	26.8	180	2610	KT0040I H005
KT 24	62	16.3	200	2900	1750	123	32.4	140	2030	KT0024I H005
KT 28	84	22.2	175	2540	1750	123	32.4	170	2470	KT0028I H005
KT 30	96	25.5	140	2030	1750	123	32.4	150	2180	KT0030I H005
KT 36	125	33.1	115	1670	1580	111	29.2	180	2610	KT0036I H005



Motor comes standard on the right (see picture).
Add S after I when ordering motor on the left: i.e.KT0024IS H005
Replace first O after H with 2 if NPT pump. i.e.KT0024IS H205

ZRPM1 Revolution counter



Inductive proximity sensor, c/w female connector M12, 4 pin, IP67, field attachable, and ring nut reduction M18 x 1

Power supply

12/24 VDC

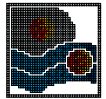
Ordering Code

ZRPM1

KT HP series

35HP

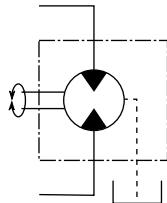
HY-PACK



Gear 48 cc.

Mod.	Volume		Pressure		Speed r.p.m.	Oil volume		Oil press.		Ordering Code
	L/min	Gpm	bar	p.s.i.		L/min	Gpm	bar	p.s.i.	
KT 18	29	7.6	500	7250	1450	70	18.4	280	4060	KT0018I H001
KT 19*	30	7.9	480	6960	1450	70	18.4	300	4350	KT0019I H001
KT 20	36	9.4	400	5800	1450	70	18.4	280	4060	KT0020I H001
KT 22	43	11.4	320	4640	1450	70	18.4	270	3920	KT0022I H001
KT 16	27	7.2	500	7250	1750	84	22.2	220	3190	KT0016I H001
KT 18	35	9.2	400	5800	1750	84	22.2	230	3340	KT0018I H001
KT 19*	36	9.5	400	5800	1750	84	22.2	250	3630	KT0019I H001
KT 20	43	11.3	320	4640	1750	84	22.2	220	3190	KT0020I H001
KT 22	52	13.7	250	3630	1750	84	22.2	210	3050	KT0022I H001

Motor comes standard on the right (see picture).
Add S after I when ordering motor on the left: i.e.KT0020IS H001
Replace first 0 after H with 2 if NPT pump. i.e.KT0020IS H201



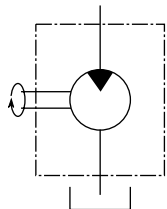
(*) Available from May 2018



Piston 64 cc.

Mod.	Volume		Pressure		Speed r.p.m.	Oil volume		Oil press.		Ordering Code
	L/min	Gpm	bar	p.s.i.		L/min	Gpm	bar	p.s.i.	
KT 18	29	7.6	500	7250	1450	93	24.5	210	3050	KT0018I H002
KT 19*	30	7.9	500	7250	1450	93	24.5	240	3480	KT0018I H002
KT 20	36	9.4	400	5800	1450	93	24.5	210	3050	KT0020I H002
KT 22	43	11.4	320	4640	1450	93	24.5	200	2900	KT0022I H002
KT 16	27	7.2	500	7250	1750	112	29.6	170	2470	KT0016I H002
KT 18	35	9.2	400	5800	1750	112	29.6	170	2470	KT0018I H002
KT 19*	36	9.5	400	5800	1750	112	29.6	190	2760	KT0019I H002
KT 20	43	11.3	320	4640	1750	112	29.6	170	2470	KT0020I H002
KT 22	52	13.7	250	3630	1750	112	29.6	160	2320	KT0022I H002

Motor comes standard on the right (see picture).
Add S after I when ordering motor on the left: i.e.KT0020IS H002
Replace first 0 after H with 2 if NPT pump. i.e.KT0020IS H202



(*) Available from May 2018

ZRPM1 Revolution counter



Inductive proximity sensor, c/w female connector M12, 4 pin, IP67, field attachable, and ring nut reduction M18 x 1

Power supply

12/24 VDC

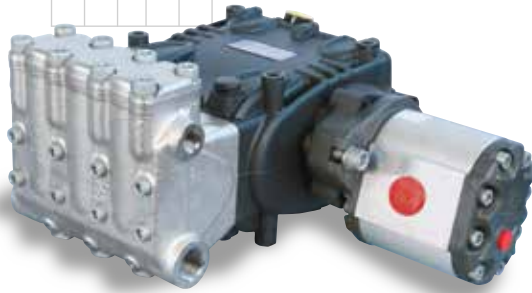
Ordering Code

ZRPM1

KT HP series

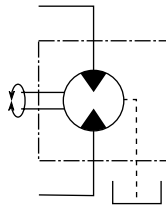
35HP

HY-PACK



Motor comes standard on the right (see picture).
Add S after I when ordering motor on the left: i.e.KT0020IS H003
Replace first O after H with 2 if NPT pump. i.e.KT0020IS H203

(*) Available from May 2018



Gear 53 cc.

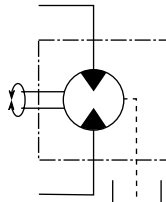
Mod.	Volume		Pressure		Speed r.p.m.	Oil volume		Oil press.		Ordering Code
	L/min	Gpm	bar	p.s.i.		L/min	Gpm	bar	p.s.i.	
KT 18	29	7.6	415	6020	1450	77	20.3	210	3050	KT0018I H003
KT 19*	30	7.9	370	5370	1450	77	20.3	210	3050	KT0018I H003
KT 20	36	9.4	330	4790	1450	77	20.3	210	3050	KT0020I H003
KT 22	43	11.4	275	3990	1450	77	20.3	210	3050	KT0022I H003
KT 16	27	7.2	500	7250	1750	93	24.5	200	2900	KT0016I H003
KT 18	35	9.2	400	5800	1750	93	24.5	210	3050	KT0018I H003
KT 19*	36	9.5	370	5370	1750	93	24.5	210	3050	KT0019I H003
KT 20	43	11.3	320	4640	1750	93	24.5	200	2900	KT0020I H003
KT 22	52	13.7	250	3630	1750	93	24.5	190	2760	KT0022I H003

Gear 62 cc.

Mod.	Volume		Pressure		Speed r.p.m.	Oil volume		Oil press.		Ordering Code
	L/min	Gpm	bar	p.s.i.		L/min	Gpm	bar	p.s.i.	
KT 18	29	7.6	440	6380	1450	90	23.8	190	2760	KT0018I H004
KT 19*	30	7.9	390	5660	1450	90	23.8	190	2760	KT0018I H004
KT 20	36	9.4	350	5080	1450	90	23.8	190	2760	KT0020I H004
KT 22	43	11.4	290	4210	1450	90	23.8	190	2760	KT0022I H004
KT 16	27	7.2	500	7250	1750	109	28.7	180	2610	KT0016I H004
KT 18	35	9.2	400	5800	1750	109	28.7	180	2610	KT0018I H004
KT 19*	36	9.5	390	5660	1750	109	28.7	190	2760	KT0019I H004
KT 20	43	11.3	320	4640	1750	109	28.7	180	2610	KT0020I H004
KT 22	52	13.7	250	3630	1750	109	28.7	170	2470	KT0022I H004

Motor comes standard on the right (see picture).
Add S after I when ordering motor on the left: i.e.KT0020IS H004
Replace first O after H with 2 if NPT pump. i.e.KT0020IS H204

(*) Available from May 2018

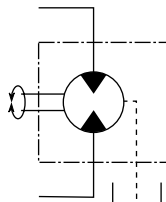


Gear 70 cc.

Mod.	Volume		Pressure		Speed r.p.m.	Oil volume		Oil press.		Ordering Code
	L/min	Gpm	bar	p.s.i.		L/min	Gpm	bar	p.s.i.	
KT 18	29	7.6	470	6820	1450	102	26.8	180	2610	KT0018I H005
KT 19*	30	7.9	420	6090	1450	102	26.8	180	2610	KT0018I H005
KT 20	36	9.4	380	5510	1450	102	26.8	180	2610	KT0020I H005
KT 22	43	11.4	310	4500	1450	102	26.8	180	2610	KT0022I H005
KT 16	27	7.2	500	7250	1750	123	32.4	160	2320	KT0016I H005
KT 18	35	9.2	400	5800	1750	123	32.4	160	2320	KT0018I H005
KT 19*	36	9.5	400	5800	1750	123	32.4	180	2610	KT0019I H005
KT 20	43	11.3	320	4640	1750	123	32.4	160	2320	KT0020I H005
KT 22	52	13.7	250	3630	1750	123	32.4	150	2180	KT0022I H005

Motor comes standard on the right (see picture).
Add S after I when ordering motor on the left: i.e.KT0020IS H005
Replace first O after H with 2 if NPT pump. i.e.KT0020IS H205

(*) Available from May 2018



ZRPM1 Revolution counter



Inductive proximity sensor, c/w female connector M12, 4 pin, IP67, field attachable, and ring nut reduction M18 x 1

Power supply

12/24 VDC

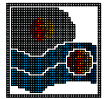
Ordering Code

ZRPM1

KV series

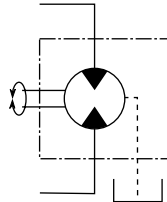
35HP

HY-PACK



Gear 48 cc.

Motor comes standard on the right (see picture).
 Add S after I when ordering motor on the left: i.e. KV0012IS H001
 Replace first O after H with 2 if NPT pump. i.e. KV0012IS H201

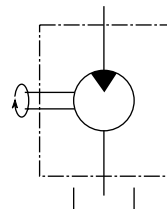


Mod.	Volume		Pressure		Speed r.p.m.	Oil volume		Oil press.		Ordering Code
	L/min	Gpm	bar	p.s.i.		L/min	Gpm	bar	p.s.i.	
KV 12	12,8	3.4	1100	15950	1450	70	18.4	280	4060	KV0012I H001
KV 14	17,4	4.6	800	11600	1450	70	18.4	270	3920	KV0014I H001
KV 12	15,4	4.1	1100	15950	1750	84	22.2	280	4060	KV0012I H001
KV 14	21,0	5.5	800	11600	1750	84	22.2	270	3920	KV0014I H001



Piston 64 cc.

Motor comes standard on the right (see picture).
 Add S after I when ordering motor on the left: i.e. KV0012IS H002
 Replace first O after H with 2 if NPT pump. i.e. KV0012IS H202



Mod.	Volume		Pressure		Speed r.p.m.	Oil volume		Oil press.		Code
	L/min	Gpm	bar	p.s.i.		L/min	Gpm	bar	p.s.i.	
KV 12	12,8	3.4	1100	15950	1450	93	24.5	210	3050	KV0012I H002
KV 14	17,4	4.6	800	11600	1450	93	24.6	210	3050	KV0014I H002
KV 12	15,4	4.1	1100	15950	1750	112	29.6	210	3050	KV0012I H002
KV 14	21,0	5.5	800	11600	1750	112	29.6	210	3050	KV0014I H002

ZRPM1 Revolution counter

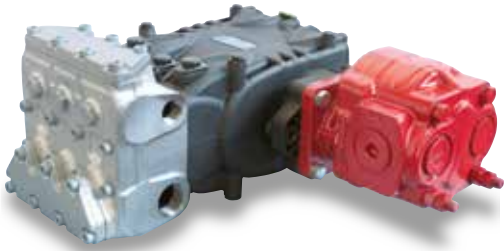


	Power supply	Ordering Code
Inductive proximity sensor, c/w female connector M12, 4 pin, IP67, field attachable, and ring nut reduction M18 x 1	12/24 VDC	ZRPM1

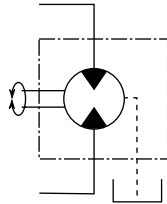
KF series

50HP

HY-PACK



Motor comes standard on the right (see picture).
Add S after I when ordering motor on the left: i.e.KF0028IS H001
Replace first O after H with 2 if NPT pump. i.e.KF0028IS H201

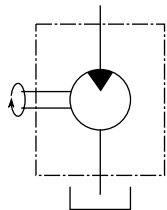


Gear 117 cc.

Mod.	Volume		Pressure		Speed r.p.m.	Oil volume		Oil press.		Ordering Code
	L/min	Gpm	bar	p.s.i.		L/min	Gpm	bar	p.s.i.	
KF 28	93	24.5	210	3050	1000	117	30.9	230	3340	KF0028I H001
KF 30	106	28.0	200	2900	1000	117	30.9	250	3630	KF0030I H001
KF 32	120	31.7	180	2610	1000	117	30.9	250	3630	KF0032I H001
KF 36	153	40.0	130	1890	1000	117	30.9	230	3340	KF0036I H001
KF 40	170	45.0	110	1600	900	105	27.8	240	3480	KF0040I H001



Motor comes standard on the right (see picture).
Add S after I when ordering motor on the left: i.e.KF0028IS H002
Replace first O after H with 2 if NPT pump. i.e.KF0028IS H202

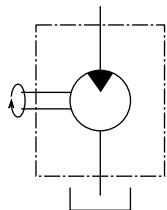


Piston 84 cc.

Mod.	Volume		Pressure		Speed r.p.m.	Oil volume		Oil press.		Ordering Code
	L/min	Gpm	bar	p.s.i.		L/min	Gpm	bar	p.s.i.	
KF 28	93	24.5	210	3050	1000	84	22.2	320	4640	KF0028I H002
KF 30	106	28.0	200	2900	1000	84	22.2	340	4930	KF0030I H002
KF 32	120	31.7	180	2610	1000	84	22.2	350	5080	KF0032I H002
KF 36	153	40.0	130	1890	1000	84	22.2	320	4640	KF0036I H002
KF 40	170	45.0	110	1600	900	76	20.0	340	4930	KF0040I H002



Motor comes standard on the right (see picture).
Add S after I when ordering motor on the left: i.e.KF0028IS H003
Replace first O after H with 2 if NPT pump. i.e.KF0028IS H203



Piston 108 cc.

Mod.	Volume		Pressure		Speed r.p.m.	Oil volume		Oil press.		Ordering Code
	L/min	Gpm	bar	p.s.i.		L/min	Gpm	bar	p.s.i.	
KF 28	93	24.5	210	3050	1000	108	28.5	250	3630	KF0028I H003
KF 30	106	28.0	200	2900	1000	108	28.5	270	3920	KF0030I H003
KF 32	120	31.7	180	2610	1000	108	28.5	280	4060	KF0032I H003
KF 36	153	40.0	130	1890	1000	108	28.5	250	3630	KF0036I H003
KF 40	170	45.0	110	1600	900	97	25.7	260	3770	KF0040I H003

ZRPM1 Revolution counter



Inductive proximity sensor, c/w female connector M12, 4 pin, IP67, field attachable, and ring nut reduction M18 x 1

Power supply

12/24 VDC

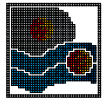
Ordering Code

ZRPM1

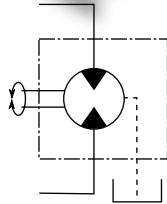
HF series

50HP

HY-PACK



Motor comes standard on the right (see picture).
Add S after I when ordering motor on the left: i.e.HF0018IS H001
Replace first 0 after H with 2 if NPT pump. i.e.HF0018IS H201

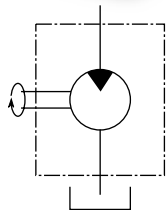


Gear 117 cc.

Mod.	Volume		Pressure		Speed r.p.m.	Oil volume		Oil press.		Ordering Code
	L/min	Gpm	bar	p.s.i.		L/min	Gpm	bar	p.s.i.	
HF 18	30	7.9	600	8700	800	94	24.7	270	3920	HF0018I H001
	38	10.1	500	7250	1000	117	30.9	220	3190	
HF 20	47	12.4	400	5800	1000	117	30.9	220	3190	HF0020I H001
HF 22	57	15.0	350	5080	1000	117	30.9	230	3340	HF0022I H001
HF 25	73	19.3	280	4060	1000	117	30.9	240	3480	HF0025I H001



Motor comes standard on the right (see picture).
Add S after I when ordering motor on the left: i.e.HF0018IS H002
Replace first 0 after H with 2 if NPT pump. i.e.HF0018IS H202

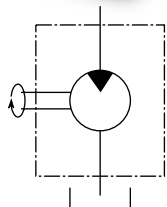


Piston 84 cc.

Mod.	Volume		Pressure		Speed r.p.m.	Oil volume		Oil press.		Ordering Code
	L/min	Gpm	bar	p.s.i.		L/min	Gpm	bar	p.s.i.	
HF 18	30	7.9	600	8700	800	67	17.8	370	5370	HF0018I H001
	38	10.1	500	7250	1000	84	22.2	310	4500	
HF 20	47	12.4	400	5800	1000	84	22.2	310	4500	HF0020I H001
HF 22	57	15.0	350	5080	1000	84	22.2	320	4640	HF0022I H001
HF 25	73	19.3	280	4060	1000	84	22.2	340	4930	HF0025I H001



Motor comes standard on the right (see picture).
Add S after I when ordering motor on the left: i.e.HF0018IS H003
Replace first 0 after H with 2 if NPT pump. i.e.HF0018IS H203



Piston 108 cc.

Mod.	Volume		Pressure		Speed r.p.m.	Oil volume		Oil press.		Ordering Code
	L/min	Gpm	bar	p.s.i.		L/min	Gpm	bar	p.s.i.	
HF 18	30	7.9	600	8700	800	86	22.8	290	4210	HF0018I H001
	38	10.1	500	7250	1000	108	28.5	240	3480	
HF 20	47	12.4	400	5800	1000	108	28.5	240	3480	HF0020I H001
HF 22	57	15.0	350	5080	1000	108	28.5	250	3630	HF0022I H001
HF 25	73	19.3	280	4060	1000	108	28.5	260	3770	HF0025I H001

ZRPM1 Revolution counter



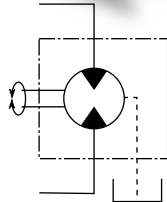
	Power supply	Ordering Code
Inductive proximity sensor, c/w female connector M12, 4 pin, IP67, field attachable, and ring nut reduction M18 x 1	12/24 VDC	ZRPM1

VFH series

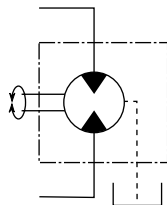
50HP



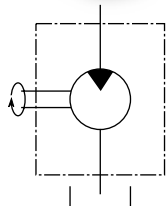
Motor comes standard on the right (see picture).
Add S after I when ordering motor on the left: i.e. VFH0012IS H001
Replace first 0 after H with 2 if NPT pump.: i.e. VFH0012IS H201



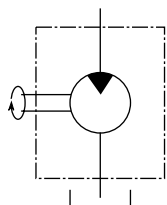
Motor comes standard on the right (see picture).
Add S after I when ordering motor on the left: i.e. VFH0012IS H002
Replace first 0 after H with 2 if NPT pump.: i.e. VFH0012IS H202



Motor comes standard on the right (see picture).
Add S after I when ordering motor on the left: i.e. VFH0012IS H003
Replace first 0 after H with 2 if NPT pump.: i.e. VFH0012IS H203



Motor comes standard on the right (see picture).
Add S after I when ordering motor on the left: i.e. VFH0012IS H004
Replace first 0 after H with 2 if NPT pump.: i.e. VFH0012IS H204



HY-PACK

Gear 117 cc.

Mod.	Volume		Pressure		Speed r.p.m.	Oil volume		Oil press.		Ordering Code
	L/min	Gpm	bar	p.s.i.		L/min	Gpm	bar	p.s.i.	
VFH 12	12,5	3.3	1500	21750	750	88	23.2	300	4350	VFH0012I H001
	15,0	4.0	1200	17400	900	105	27.8	240	3480	
VFH 14	17,0	4.5	1100	15950	750	88	23.2	300	4350	VFH0014I H001
	23,0	6.0	800	11600	1000	117	30.9	220	3190	

Gear 184 cc.

Mod.	Volume		Pressure		Speed r.p.m.	Oil volume		Oil press.		Ordering Code
	L/min	Gpm	bar	p.s.i.		L/min	Gpm	bar	p.s.i.	
VFH 12	12,5	3.3	1500	21750	750	138	36.5	190	2760	VFH0012I H002
	15,0	4.0	1200	17400	900	166	43.8	150	2180	
VFH 14	17,0	4.5	1100	15950	750	138	36.5	190	2760	VFH0014I H002
	23,0	6.0	800	11600	1000	184	48.6	140	2030	

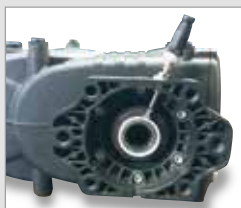
Piston 108 cc.

Mod.	Volume		Pressure		Speed r.p.m.	Oil volume		Oil press.		Ordering Code
	L/min	Gpm	bar	p.s.i.		L/min	Gpm	bar	p.s.i.	
VFH 12	12,5	3.3	1500	21750	750	81	21.4	320	4640	VFH0012I H003
	15,0	4.0	1200	17400	900	97	25.7	260	3770	
VFH 14	17,0	4.5	1100	15950	750	81	21.4	320	4640	VFH0014I H003
	23,0	6.0	800	11600	1000	108	28.5	240	3480	

Piston 130 cc.

Mod.	Volume		Pressure		Speed r.p.m.	Oil volume		Oil press.		Ordering Code
	L/min	Gpm	bar	p.s.i.		L/min	Gpm	bar	p.s.i.	
VFH 12	12,5	3.3	1500	21750	750	98	25.8	270	3920	VFH0012I H002
	15,0	4.0	1200	17400	900	117	30.9	220	3190	
VFH 14	17,0	4.5	1100	15950	750	98	25.8	270	3920	VFH0014I H002
	23,0	6.0	800	11600	1000	130	34.3	200	2900	

ZRPM1 Revolution counter



Inductive proximity sensor, c/w female connector M12 4 pin, P67, field attachable, and ring nut reduction M18 x 1

Power supply

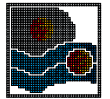
12/24 VDC

Ordering Code

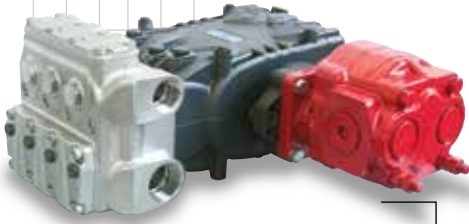
ZRPM1

KS series

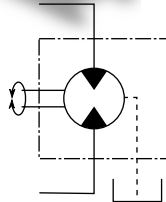
HY-PACK



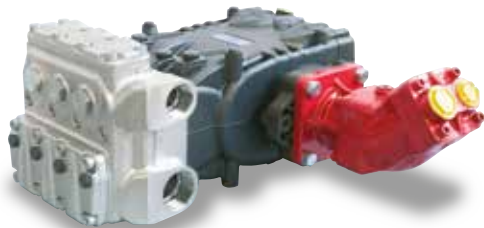
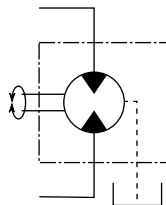
75HP



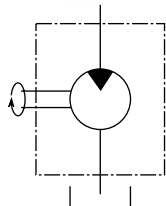
Motor comes standard on the right (see picture).
Add S after I when ordering motor on the left: i.e. KS0036IS H001
Replace first O after H with 2 if NPT pump.: i.e. KS0036IS H201



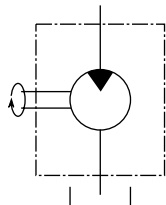
Motor comes standard on the right (see picture).
Add S after I when ordering motor on the left: i.e. KS0036IS H002
Replace first O after H with 2 if NPT pump.: i.e. KS0036IS H202



Motor comes standard on the right (see picture).
Add S after I when ordering motor on the left: i.e. KS0036IS H003
Replace first O after H with 2 if NPT pump.: i.e. KS0036IS H203



Motor comes standard on the right (see picture).
Add S after I when ordering motor on the left: i.e. KS0036IS H004
Replace first O after H with 2 if NPT pump.: i.e. KS0036IS H204



Gear 117 cc.

Mod.	Volume		Pressure		Speed r.p.m.	Oil volume		Oil press.		Ordering Code
	L/min	Gpm	bar	p.s.i.		L/min	Gpm	bar	p.s.i.	
KS 28	110	29.1	250	3630	1200	140	37.1	270	3920	KS0028I H001
KS 32	145	38.3	200	2900	1200	140	37.1	280	4060	KS0032I H001
KS 36	183	48.3	160	2320	1200	140	37.1	290	4210	KS0036I H001
KS 40	226	59.7	140	2030	1200	140	37.1	310	4500	KS0040I H001

Gear 184 cc.

Mod.	Volume		Pressure		Speed r.p.m.	Oil volume		Oil press.		Ordering Code
	L/min	Gpm	bar	p.s.i.		L/min	Gpm	bar	p.s.i.	
KS 28	110	29.1	250	3630	1200	221	58.3	170	2470	KS0028I H002
KS 32	145	38.3	200	2900	1200	221	58.3	180	2610	KS0032I H002
KS 36	183	48.3	160	2320	1200	221	58.3	180	2610	KS0036I H002
KS 40	226	59.7	140	2030	1200	221	58.3	200	2900	KS0040I H002

Piston 108 cc.

Mod.	Volume		Pressure		Speed r.p.m.	Oil volume		Oil press.		Ordering Code
	L/min	Gpm	bar	p.s.i.		L/min	Gpm	bar	p.s.i.	
KS 28	110	29.1	250	3630	1200	130	34.2	290	4210	KS0028I H003
KS 32	145	38.3	200	2900	1200	130	34.2	310	4500	KS0032I H003
KS 36	183	48.3	160	2320	1200	130	34.2	310	4500	KS0036I H003
KS 40	226	59.7	140	2030	1200	130	34.2	330	4790	KS0040I H003

Piston 130 cc.

Mod.	Volume		Pressure		Speed r.p.m.	Oil volume		Oil press.		Ordering Code
	L/min	Gpm	bar	p.s.i.		L/min	Gpm	bar	p.s.i.	
KS 28	110	29.1	250	3630	1200	156	41.2	240	3480	KS0028I H004
KS 32	145	38.3	200	2900	1200	156	41.2	250	3630	KS0032I H004
KS 36	183	48.3	160	2320	1200	156	41.2	260	3770	KS0036I H004
KS 40	226	59.7	140	2030	1200	156	41.2	280	4060	KS0040I H004

ZRPM1 Revolution counter



Inductive proximity sensor, c/w female connector M12 4 pin, P67, field attachable, and ring nut reduction M18 x 1

Power supply

12/24 VDC

Ordering Code

ZRPM1

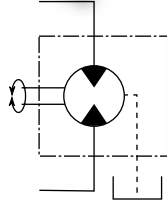
HS series

HY-PACK

75HP



Motor comes standard on the right (see picture).
Add S after I when ordering motor on the left: i.e. HS0018IS H001
Replace first O after H with 2 if NPT pump.: i.e. HS0018IS H201



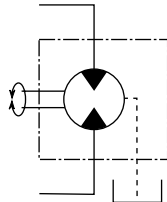
Gear 117 cc.

Mod.	Volume		Pressure		Speed r.p.m.	Oil volume		Oil press.		Ordering Code
	L/min	Gpm	bar	p.s.i.		L/min	Gpm	bar	p.s.i.	
HS 18	46	12.1	600	8700	1200	140	37.1	270	3920	HS0018I H001
HS 20	57	15.1	500	7250	1200	140	37.1	280	4060	HS0020I H001
HS 22	68	18.0	400	5800	1200	140	37.1	270	3920	HS0022I H001

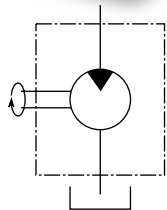
Gear 184 cc.

Mod.	Volume		Pressure		Speed r.p.m.	Oil volume		Oil press.		Ordering Code
	L/min	Gpm	bar	p.s.i.		L/min	Gpm	bar	p.s.i.	
HS 18	46	12.1	600	8700	1200	221	58.3	170	2470	HS0018I H002
HS 20	57	15.1	500	7250	1200	221	58.3	180	2610	HS0020I H002
HS 22	68	18.0	400	5800	1200	221	58.3	170	2470	HS0022I H002

Motor comes standard on the right (see picture).
Add S after I when ordering motor on the left: i.e. HS0018IS H002
Replace first O after H with 2 if NPT pump.: i.e. HS0018IS H202



Motor comes standard on the right (see picture).
Add S after I when ordering motor on the left: i.e. HS0018IS H003
Replace first O after H with 2 if NPT pump.: i.e. HS0018IS H203



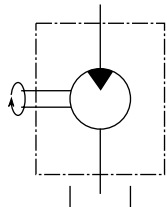
Piston 108 cc.

Mod.	Volume		Pressure		Speed r.p.m.	Oil volume		Oil press.		Ordering Code
	L/min	Gpm	bar	p.s.i.		L/min	Gpm	bar	p.s.i.	
HS 18	46	12.1	600	8700	1200	130	34,2	290	4210	HS0018I H003
HS 20	57	15.1	500	7250	1200	130	34,2	300	4350	HS0020I H003
HS 22	68	18.0	400	5800	1200	130	34,2	290	4210	HS0022I H003

Piston 130 cc.

Mod.	Volume		Pressure		Speed r.p.m.	Oil volume		Oil press.		Ordering Code
	L/min	Gpm	bar	p.s.i.		L/min	Gpm	bar	p.s.i.	
HS 18	46	12.1	600	8700	1200	156	41.2	240	3480	HS0018I H004
HS 20	57	15.1	500	7250	1200	156	41.2	250	3630	HS0020I H004
HS 22	68	18.0	400	5800	1200	156	41.2	240	3480	HS0022I H004

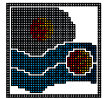
Motor comes standard on the right (see picture).
Add S after I when ordering motor on the left: i.e. HS0018IS H004
Replace first O after H with 2 if NPT pump.: i.e. HS0018IS H204



ZRPM1 Revolution counter



	Power supply	Ordering Code
Inductive proximity sensor, c/w female connector M12 4 pin, P67, field attachable, and ring nut reduction M18 x 1	12/24 VDC	ZRPM1

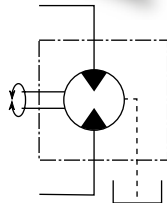


VKH series

75HP



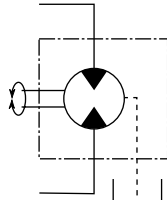
Motor comes standard on the right (see picture).
Add S after I when ordering motor on the left: i.e. VKH0012IS H001
Replace first O after H with 2 if NPT pump.: i.e. VKH0012IS H201



Gear 117 cc.

Mod.	Volume		Pressure		Speed r.p.m.	Oil volume		Oil press.		Ordering Code
	L/min	Gpm	bar	p.s.i.		L/min	Gpm	bar	p.s.i.	
VKH 12	20	5.3	1500	21750	1200	140	37.1	300	4350	VKH0012I H001
VKH 14	28	7.4	1100	15950	1200	140	37.1	300	4350	VKH0014I H001

Motor comes standard on the right (see picture).
Add S after I when ordering motor on the left: i.e. KS0036IS H002
Replace first O after H with 2 if NPT pump.: i.e. KS0036IS H202

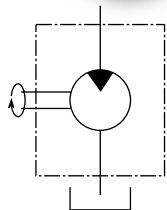


Gear 184 cc.

Mod.	Volume		Pressure		Speed r.p.m.	Oil volume		Oil press.		Ordering Code
	L/min	Gpm	bar	p.s.i.		L/min	Gpm	bar	p.s.i.	
VKH 12	20	5.3	1500	21750	1200	221	58.3	190	2760	VKH0012I H002
VKH 14	28	7.4	1100	15950	1200	221	58.3	190	2760	VKH0014I H002



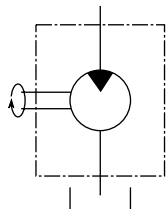
Motor comes standard on the right (see picture).
Add S after I when ordering motor on the left: i.e. VKH0012IS H003
Replace first O after H with 2 if NPT pump.: i.e. VKH0012IS H203



Piston 108 cc.

Mod.	Volume		Pressure		Speed r.p.m.	Oil volume		Oil press.		Ordering Code
	L/min	Gpm	bar	p.s.i.		L/min	Gpm	bar	p.s.i.	
VKH 12	20	5.3	1500	21750	1200	130	34.2	320	4640	VKH0012I H003
VKH 14	28	7.4	1100	15950	1200	130	34.2	320	4640	VKH0014I H003

Motor comes standard on the right (see picture).
Add S after I when ordering motor on the left: i.e. VKH0012IS H004
Replace first O after H with 2 if NPT pump.: i.e. VKH0012IS H204



Piston 130 cc.

Mod.	Volume		Pressure		Speed r.p.m.	Oil volume		Oil press.		Ordering Code
	L/min	Gpm	bar	p.s.i.		L/min	Gpm	bar	p.s.i.	
VKH 12	20	5.3	1500	21750	1200	156	41.2	270	3920	VKH0012I H004
VKH 14	28	7.4	1100	15950	1200	156	41.2	270	3920	VKH0014I H004

ZRPM1 Revolution counter



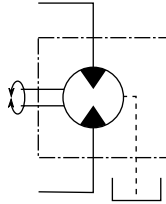
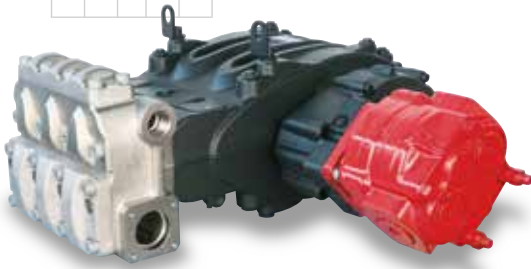
Power supply	Ordering Code
12/24 VDC	ZRPM1

Inductive proximity sensor, c/w female connector M12 4 pin, P67, field attachable, and ring nut reduction M18 x 1

MWLP series

100HP

HY-PACK



Mod.	Ø mm	Volume		Pressure		Speed r.p.m.	Gear box Side	Gear box Angle	Gear 117 cc.			
		L/min	Gpm	bar	p.s.i.				Oil volume L/min	Oil press. Gpm		
MW MWR	45	267	70.5	155	2250	1800	Left (L) or Right (R)	L1/R1 L2/R2 L3/R3 L4/R4 L5/R5	211	55.6		
						2200			270	3920		
	50	330	87.2	125	1820	1800			257	68.0	220	3190
						2200			211	55.6	270	3920
	55	399	105.4	100	1450	1800			257	68.0	220	3190
						2200			211	55.6	260	3770

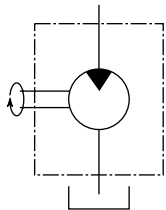
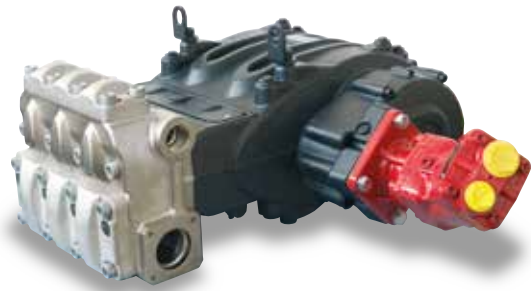
Gear 117 cc.

Mod.	Ø mm	Volume		Pressure		Speed r.p.m.	Gear box Side	Gear box Angle	Gear 184 cc.			
		L/min	Gpm	bar	p.s.i.				Oil volume L/min	Oil press. Gpm		
MW MWR	45	267	70.5	155	2250	1800	Left (L) or Right (R)	L1/R1 L2/R2 L3/R3 L4/R4 L5/R5	331	87.5		
						2200			170	2470		
	50	330	87.2	125	1820	1800			405	106.9	140	2030
						2200			331	87.5	170	2470
	55	399	105.4	100	1450	1800			405	106.9	140	2030
						2200			331	87.5	170	2470

Gear 184 cc.

Codes Assembly Example: MW 45 1800 r.p.m., G.B. left, angle 2, motor 117 cc

MW	45	1800	Left	L2	117
----	----	------	------	----	-----



Mod.	Ø mm	Volume		Pressure		Speed r.p.m.	Gear box Side	Gear box Angle	Piston 108 cc.			
		L/min	Gpm	bar	p.s.i.				Oil volume L/min	Oil press. Gpm		
MW MWR	45	267	70.5	155	2250	1800	Left (L) or Right (R)	L1/R1 L2/R2 L3/R3 L4/R4 L5/R5	194	51.4		
						2200			238	62.8	240	3480
	50	330	87.2	125	1820	1800			194	51.4	290	4210
						2200			238	62.8	240	3480
	55	399	105.4	100	1450	1800			194	51.4	280	4060
						2200			238	62.8	230	3340

Piston 108 cc.

Mod.	Ø mm	Volume		Pressure		Speed r.p.m.	Gear box Side	Gear box Angle	Piston 130 cc.			
		L/min	Gpm	bar	p.s.i.				Oil volume L/min	Oil press. Gpm		
MW MWR	45	267	70.5	155	2250	1800	Left (L) or Right (R)	L1/R1 L2/R2 L3/R3 L4/R4 L5/R5	234	61.8		
						2200			286	75.6	200	2900
	50	330	87.2	125	1820	1800			234	61.8	240	3480
						2200			286	75.6	200	2900
	55	399	105.4	100	1450	1800			234	61.8	240	3480
						2200			286	75.6	190	2760

Piston 130 cc.

Codes Assembly Example: MW 55 2200 r.p.m., G.B. right, angle 3, motor 108 cc

MW	55	2200	Right	R3	108
----	----	------	-------	----	-----

ZRPM1 Revolution counter



Inductive proximity sensor, c/w female connector M12 4 pin, P67, field attachable, and ring nut reduction M18 x 1

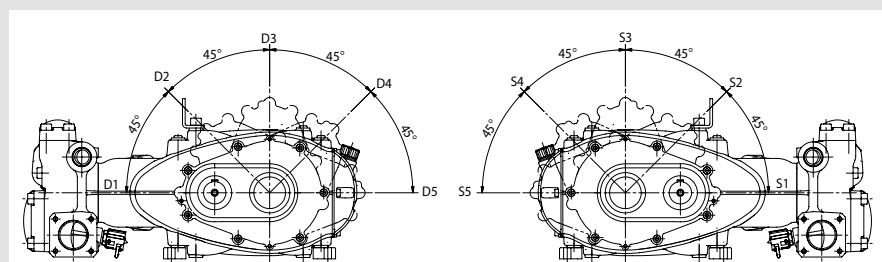
Power supply

12/24 VDC

Ordering Code

ZRPM1

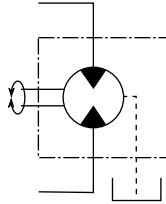
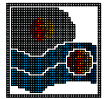
GEARBOX POSITIONING for GEAR and PISTON version



MWHP series

100HP

HY-PACK



Mod.	Ø mm	Volume		Pressure		Speed r.p.m.	Gear box Side	Gear box Angle	Oil volume		Oil press.	
		L/min	Gpm	bar	p.s.i.				L/min	Gpm	bar	p.s.i.
MW MWR	32	135	35.7	300	4350	1800	Left (L) or Right (R)	L1/R1 L2/R2 L3/R3 L4/R4 L5/R5	211	55.6	270	3920
						2200						
	36	171	45.2	240	3480	1800			211	55.6	270	3920
						2200			257	68.0	220	3190
	40	211	55.7	210	3050	1800			211	55.6	290	4210
						2200			257	68.0	240	3480

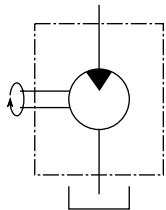
Gear 117 cc.

Mod.	Ø mm	Volume		Pressure		Speed r.p.m.	Gear box Side	Gear box Angle	Oil volume		Oil press.	
		L/min	Gpm	bar	p.s.i.				L/min	Gpm	bar	p.s.i.
MW MWR	32	135	35.7	300	4350	1800	Left (L) or Right (R)	L1/R1 L2/R2 L3/R3 L4/R4 L5/R5	331	87.5	170	2470
						2200						
	36	171	45.2	240	3480	1800			331	87.5	170	2470
						2200			405	106.9	140	2030
	40	211	55.7	210	3050	1800			331	87.5	190	2760
						2200			405	106.9	150	2180

Gear 184 cc.

Codes Assembly Example: MW 40 1800 r.p.m., G.B. left, angle 2, motor 184 cc

MW	40	1800	Left	L2	184
----	----	------	------	----	-----



Mod.	Ø mm	Volume		Pressure		Speed r.p.m.	Gear box Side	Gear box Angle	Oil volume		Oil press.	
		L/min	Gpm	bar	p.s.i.				L/min	Gpm	bar	p.s.i.
MW MWR	32	135	35.7	300	4350	1800	Left (L) or Right (R)	L1/R1 L2/R2 L3/R3 L4/R4 L5/R5	194	51.4	280	4060
						2200						
	36	171	45.2	240	3480	1800			194	51.4	285	4140
						2200			238	62.8	235	3410
	40	211	55.7	210	3050	1800			194	51.4	310	4500
						2200			238	62.8	250	3630

Piston 108 cc.

Mod.	Ø mm	Volume		Pressure		Speed r.p.m.	Gear box Side	Gear box Angle	Oil volume		Oil press.	
		L/min	Gpm	bar	p.s.i.				L/min	Gpm	bar	p.s.i.
MW MWR	32	135	35.7	300	4350	1800	Left (L) or Right (R)	L1/R1 L2/R2 L3/R3 L4/R4 L5/R5	234	61.8	240	3480
						2200						
	36	171	45.2	240	3480	1800			234	61.8	240	3480
						2200			286	75.6	200	2900
	40	211	55.7	210	3050	1800			234	61.8	260	3770
						2200			286	75.6	220	3190

Piston 130 cc.

Codes Assembly Example: MW 55 2200 r.p.m., G.B. right, angle 3, motor 108 cc

MW	36	2200	Right	R3	108
----	----	------	-------	----	-----

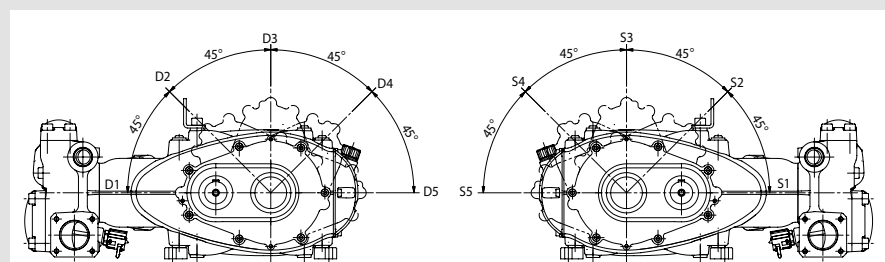
ZRPM1 Revolution counter



Inductive proximity sensor, c/w female connector M12 4 pin, P67, field attachable, and ring nut reduction M18 x 1

Power supply	Ordering Code
12/24 VDC	ZRPM1

GEARBOX POSITIONING for GEAR and PISTON version



SM series

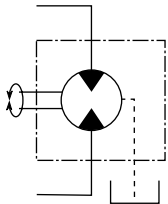
HY-PACK

100HP



Gear 117 cc.

Gear 184 cc.



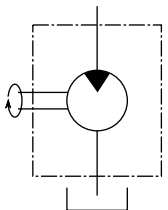
Mod.	Ø mm	Volume		Pressure		Speed r.p.m.	Gear box Side	Gear box Angle	Oil volume		Oil press.		Oil volume		Oil press.			
		L/min	Gpm	bar	p.s.i.				L/min	Gpm	bar	p.s.i.	L/min	Gpm	bar	p.s.i.		
SM	14	26	6.9	1500	21750	1800 2200	Left (L) or Right (R)	L1/R1 L2/R2 L3/R3 L4/R4 L5/R5	211	55.6	250	3630	331	87.5	160	2320		
	16	34	9.0	1200	17400	1800 2200					257	68.0	210	3050	405	106.9	140	2030
	18	43	11.4	900	13050	1800 2200					211	55.6	250	3630	331	87.5	160	2320
	20	53	14.0	750	10880	1800 2200			257	68.0	210	3050	405	106.9	140	2030		
	22	64	16.9	600	8700	1800 2200			211	55.6	250	3630	331	87.5	160	2320		
	24	76	20.1	500	7250	1800 2200			257	68.0	210	3050	405	106.9	140	2030		

Codes Assembly Example: SM 26 1800 r.p.m., G.B. left, angle 2, motor 117 cc

SM	26	1800	Left	L2	117
----	----	------	------	----	-----

Piston 108 cc.

Piston 130 cc.



Mod.	Ø mm	Volume		Pressure		Speed r.p.m.	Gear box Side	Gear box Angle	Oil volume		Oil press.		Oil volume		Oil press.			
		L/min	Gpm	bar	p.s.i.				L/min	Gpm	bar	p.s.i.	L/min	Gpm	bar	p.s.i.		
SM	14	26	6.9	1500	21750	1800 2200	Left (L) or Right (R)	L1/R1 L2/R2 L3/R3 L4/R4 L5/R5	194	51.4	280	4060	234	61.8	230	3340		
	16	34	9.0	1200	17400	1800 2200					238	62.8	230	3340	286	75.6	190	2760
	18	43	11.4	900	13050	1800 2200					194	51.4	270	3920	234	61.8	230	3340
	20	53	14.0	750	10880	1800 2200			238	62.8	230	3340	286	75.6	190	2760		
	22	64	16.9	600	8700	1800 2200			194	51.4	280	4060	234	61.8	230	3340		
	24	76	20.1	500	7250	1800 2200			238	62.8	230	3340	286	75.6	190	2760		

Codes Assembly Example: SM 26 1800 r.p.m., G.B. left, angle 2, motor 117 cc

SM	26	1800	Left	L2	108
----	----	------	------	----	-----

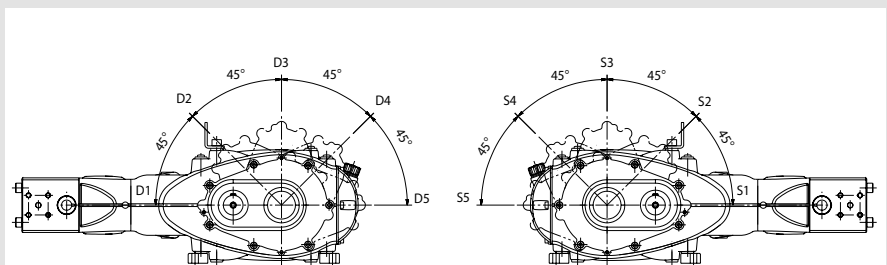
ZRPM1 Revolution counter

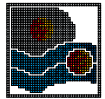


Inductive proximity sensor, c/w female connector M12 4 pin, P67, field attachable, and ring nut reduction M18 x 1

Power supply	Ordering Code
12/24 VDC	ZRPM1

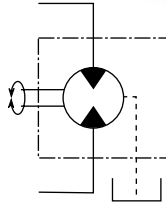
GEARBOX POSITIONING for GEAR and PISTON version





MKLP series

150HP



Gear 184 cc.

Mod.	Ø	Volume		Pressure		Speed	Gear box Side	Gear box Angle	Oil volume		Oil press.	
		L/min	Gpm	bar	p.s.i.				L/min	Gpm	bar	p.s.i.
MK MKR	55	282	74.5	200	2900	2050	Left (L) or Right (R)	L1/R1 L2/R2 L3/R3 L4/R4 L5/R5	377	99.7	210	3050
	60	335	88.5	170	2470	2050			377	99.7	210	3050
	65	393	103.8	150	2180	2050			377	99.7	220	3190

Codes Assembly Example: MK 60 2050 r.p.m., G.B. left, angle 2, motor 184 cc

MK	60			2050	Left	L2			184			
-----------	-----------	--	--	-------------	-------------	-----------	--	--	------------	--	--	--



Piston 108 cc.

Mod.	Ø	Volume		Pressure		Speed	Gear box Side	Gear box Angle	Oil volume		Oil press.	
		L/min	Gpm	bar	p.s.i.				L/min	Gpm	bar	p.s.i.
MK MKR	55	282	74.5	200	2900	2050	Left (L) or Right (R)	L1/R1 L2/R2 L3/R3 L4/R4 L5/R5	221	58.5	350	5080
	60	335	88.5	170	2470	2050			221	58.5	350	5080
	65	393	103.8	150	2180	2050			221	58.5	360	5220

Piston 130 cc.

Mod.	Ø	Portata Volume		Pressione Pressure		g/min r.p.m.	Gear box Side	Gear box Angle	Oil volume		Oil press.	
		L/min	Gpm	bar	p.s.i.				L/min	Gpm	bar	p.s.i.
MK MKR	55	282	74.5	200	2900	2050	Left (L) or Right (R)	L1/R1 L2/R2 L3/R3 L4/R4 L5/R5	267	70.4	290	4210
	60	335	88.5	170	2470	2050			267	70.4	290	4210
	65	393	103.8	150	2180	2050			267	70.4	300	4350

Codes Assembly Example: MK 55 2050 r.p.m., G.B. right, angle 5, motor 130 cc

MK	55			2050	Right	R5			130			
-----------	-----------	--	--	-------------	--------------	-----------	--	--	------------	--	--	--

ZRPM1 Revolution counter



Inductive proximity sensor, c/w female connector M12 4 pin, P67, field attachable, and ring nut reduction M18 x 1

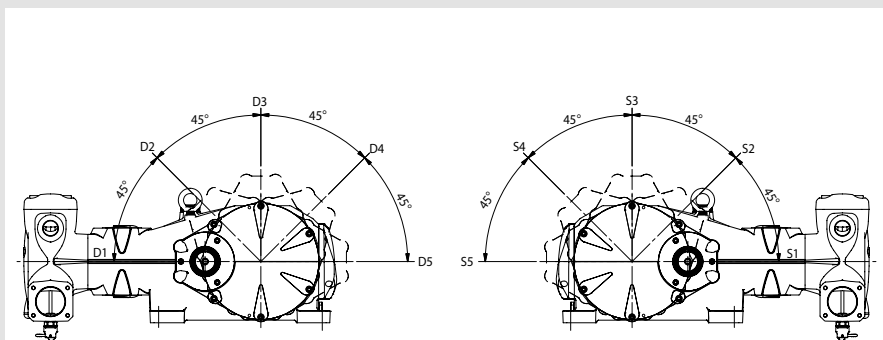
Power supply

12/24 VDC

Ordering Code

ZRPM1

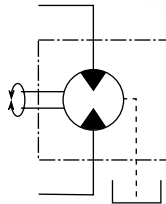
GEARBOX POSITIONING for GEAR and PISTON version



MKHP series

150HP

HY-PACK

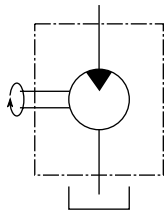


Gear 184 cc.

Mod.	Ø mm	Volume		Pressure		Speed r.p.m.	Gear box Side	Gear box Angle	Oil volume		Oil press.	
		L/min	Gpm	bar	p.s.i.				L/min	Gpm	bar	p.s.i.
MK MKR	40	149	39.4	400	5800	2050	Left (L) or Right (R)	L1/R1 L2/R2 L3/R3 L4/R4 L5/R5	377	99.7	220	3190
	45	189	49.9	300	4350	2050			377	99.7	210	3050
	50	233	61.6	250	3630	2050			377	99.7	210	3050

Codes Assembly Example: MK 40 2050 r.p.m., G.B. left, angle 2, motor 184 cc

MK	40					2050	Left	L2				184
-----------	-----------	--	--	--	--	-------------	-------------	-----------	--	--	--	------------



Piston 108 cc.

Mod.	Ø mm	Volume		Pressure		Speed r.p.m.	Gear box Side	Gear box Angle	Oil volume		Oil press.	
		L/min	Gpm	bar	p.s.i.				L/min	Gpm	bar	p.s.i.
MK MKR	40	149	39.4	400	5800	2050	Left (L) or Right (R)	L1/R1 L2/R2 L3/R3 L4/R4 L5/R5	221	58.5	370	5370
	45	189	49.9	300	4350	2050			221	58.5	350	5080
	50	233	61.6	250	3630	2050			221	58.5	360	5220

Piston 130 cc.

Mod.	Ø mm	Volume		Pressure		Speed r.p.m.	Gear box Side	Gear box Angle	Oil volume		Oil press.	
		L/min	Gpm	bar	p.s.i.				L/min	Gpm	bar	p.s.i.
MK MKR	40	149	39.4	400	5800	2050	Left (L) or Right (R)	L1/R1 L2/R2 L3/R3 L4/R4 L5/R5	267	70.4	310	4500
	45	189	49.9	300	4350	2050			267	70.4	290	4210
	50	233	61.6	250	3630	2050			267	70.4	300	4350

Codes Assembly Example: MK 50 2050 r.p.m., G.B. right, angle 5, motor 130 cc

MK	50					2050	Right	R5				130
-----------	-----------	--	--	--	--	-------------	--------------	-----------	--	--	--	------------

ZRPM1 Revolution counter



Inductive proximity sensor, c/w female connector M12 4 pin, P67, field attachable, and ring nut reduction M18 x 1

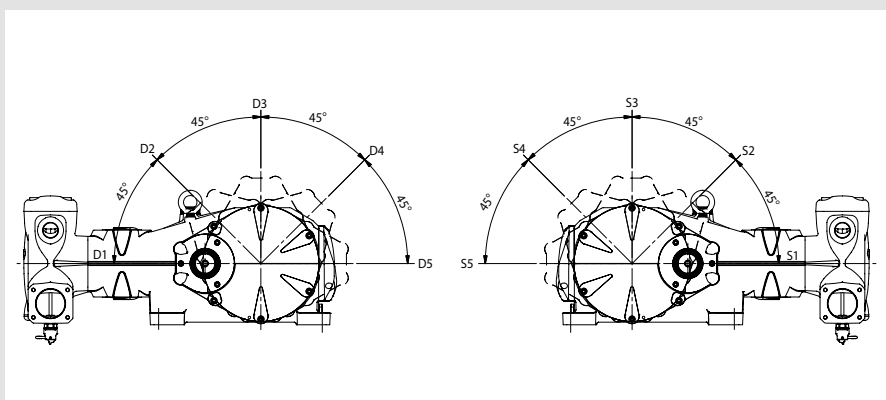
Power supply

12/24 VDC

Ordering Code

ZRPM1

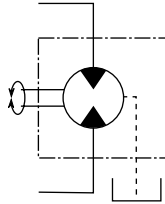
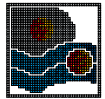
GEARBOX POSITIONING for GEAR and PISTON version



MF series

150HP

HY-PACK

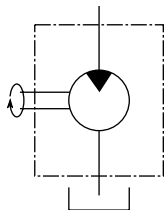


Gear 184 cc.

Mod.	Ø mm	Volume		Pressure		Speed r.p.m.	Gear box Side	Gear box Angle	Oil volume		Oil press.	
		L/min	Gpm	bar	p.s.i.				L/min	Gpm	bar	p.s.i.
MF	45	270	71.0	200	2900	1800	Left (L) or Right (R)	L1/R1 L2/R2 L3/R3 L4/R4 L5/R5	331	87.5	220	3190
						2200			405	106.9	180	2610
	50	333	88.0	170	2470	1800			331	87.5	230	3340
						2200			405	106.9	190	2760
	55	403	106	140	2030	1800			331	87.5	230	3340
						2200			405	106.9	190	2760

Codes Assembly Example: MF 45 1800 r.p.m., G.B. left, angle 2, motor 184 cc

MF	45			1800	Left	L2	184
----	----	--	--	------	------	----	-----



Piston 130 cc.

Mod.	Ø mm	Volume		Pressure		Speed r.p.m.	Gear box Side	Gear box Angle	Oil volume		Oil press.	
		L/min	Gpm	bar	p.s.i.				L/min	Gpm	bar	p.s.i.
MF	45	270	71.0	200	2900	1800	Left (L) or Right (R)	L1/R1 L2/R2 L3/R3 L4/R4 L5/R5	234	61.8	310	4500
						2200			286	75.6	260	3770
	50	333	88.0	170	2470	1800			234	61.8	330	4790
						2200			286	75.6	270	3920
	55	403	106	140	2030	1800			234	61.8	330	4790
						2200			286	75.6	270	3920

Codes Assembly Example: MF 55 2200 r.p.m., G.B. left, angle 4, motor 130 cc

MF	55			2200	Left	L4	130
----	----	--	--	------	------	----	-----

ZRPM1 Revolution counter



Inductive proximity sensor, c/w female connector M12 4 pin, P67, field attachable, and ring nut reduction M18 x 1

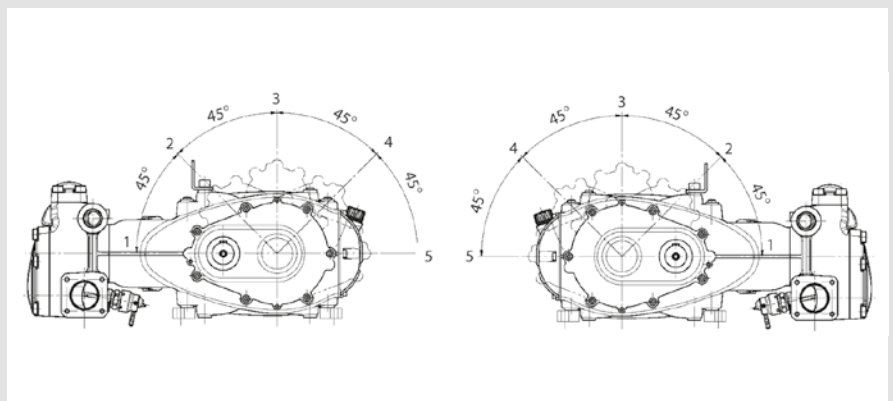
Power supply

12/24 VDC

Ordering Code

ZRPM1

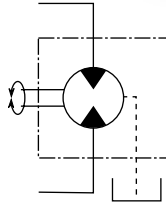
GEARBOX POSITIONING for GEAR and PISTON version



MKSLP series

180HP

HY-PACK

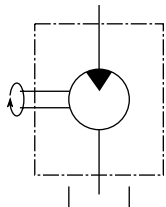


Gear 184 cc.

Mod.	Ø	Volume		Pressure		Speed	Gear box Side	Gear box Angle	Oil volume		Oil press.	
		L/min	Gpm	bar	p.s.i.				L/min	Gpm	bar	p.s.i.
MKS MKSR	55	344	90.9	200	2900	2500	Left (L) or Right (R)	L1/R1 L2/R2 L3/R3 L4/R4 L5/R5	460	121.5	210	3050
	60	409	108.0	170	2470	2500			460	121.5	210	3050
	65	480	126.8	150	2180	2500			460	121.5	220	3190

Codes Assembly Example: MKS 60 2050 r.p.m., G.B. left, angle 2, motor 184 cc

MKS	60			2050	Left	L2	184
------------	-----------	--	--	-------------	-------------	-----------	------------



Piston 130 cc.

Mod.	Ø	Volume		Pressure		Speed	Gear box Side	Gear box Angle	Oil volume		Oil press.	
		L/min	Gpm	bar	p.s.i.				L/min	Gpm	bar	p.s.i.
MKS MKSR	55	344	90.9	200	2900	2500	Left (L) or Right (R)	L1/R1 L2/R2 L3/R3 L4/R4 L5/R5	325	85.9	290	4210
	60	409	108.0	170	2470	2500			325	85.9	290	4210
	65	480	126.8	150	2180	2500			325	85.9	300	4350

Codes Assembly Example: MKS 55 2050 r.p.m., G.B. right, angle 1, motor 130 cc

MKS	55			2050	Right	R1	130
------------	-----------	--	--	-------------	--------------	-----------	------------

ZRPM1 Revolution counter



Inductive proximity sensor, c/w female connector M12 4 pin, P67, field attachable, and ring nut reduction M18 x 1

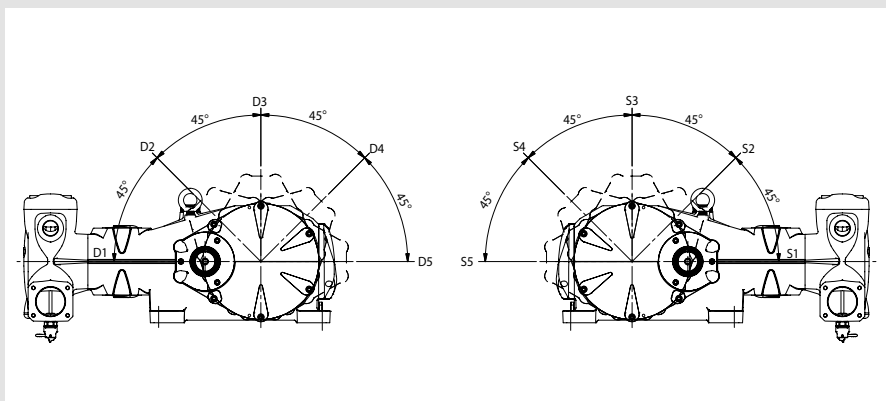
Power supply

12/24 VDC

Ordering Code

ZRPM1

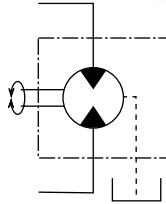
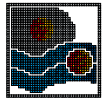
GEARBOX POSITIONING for GEAR and PISTON version



MKSLP series

180HP

HY-PACK

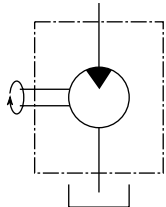


Gear 184 cc.

Mod.	Ø mm	Volume		Pressure		Speed r.p.m.	Gear box Side	Gear box Angle	Oil volume		Oil press.	
		L/min	Gpm	bar	p.s.i.				L/min	Gpm	bar	p.s.i.
MKS MKSR	40	182	48.0	400	5800	2500	Left (L) or Right (R)	L1/R1 L2/R2 L3/R3 L4/R4 L5/R5	460	121.5	220	3190
	45	230	60.7	300	4350	2500			460	121.5	210	3050
	50	284	75.0	250	3630	2500			460	121.5	210	3050

Codes Assembly Example: MKS 40 2050 r.p.m., G.B. left, angle 2, motor 184 cc

MKS	40					2050	Left	L2				184
------------	-----------	--	--	--	--	-------------	-------------	-----------	--	--	--	------------



Piston 130 cc.

Mod.	Ø mm	Volume		Pressure		Speed r.p.m.	Gear box Side	Gear box Angle	Oil volume		Oil press.	
		L/min	Gpm	bar	p.s.i.				L/min	Gpm	bar	p.s.i.
MKS MKSR	40	182	48.0	400	5800	2500	Left (L) or Right (R)	L1/R1 L2/R2 L3/R3 L4/R4 L5/R5	325	85.9	310	4500
	45	230	60.7	300	4350	2500			325	85.9	290	4210
	50	284	75.0	250	3630	2500			325	85.9	300	4350

Codes Assembly Example: MKS 50 2050 r.p.m., G.B. right, angle 1, motor 130 cc

MKS	50					2050	Right	R1				130
------------	-----------	--	--	--	--	-------------	--------------	-----------	--	--	--	------------

ZRPM1 Revolution counter



Inductive proximity sensor, c/w female connector M12 4 pin, P67, field attachable, and ring nut reduction M18 x 1

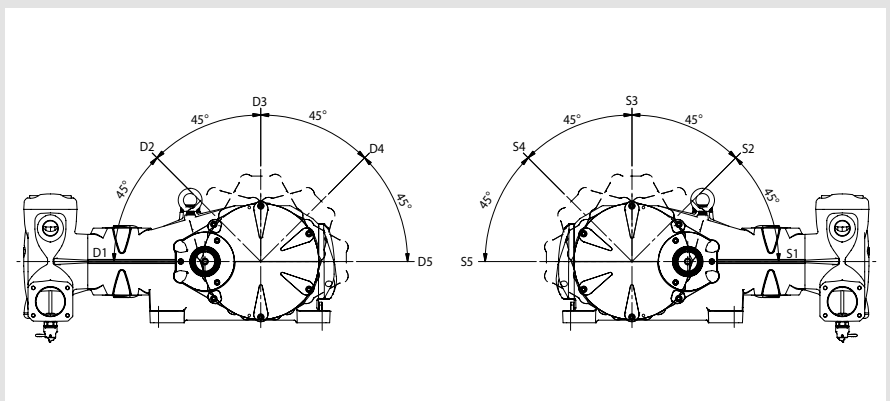
Power supply

12/24 VDC

Ordering Code

ZRPM1

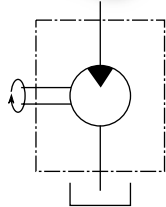
GEARBOX POSITIONING for GEAR and PISTON version



KT45M series

10HP

HY-PACK



Motor comes standard on the right (see picture).
Add S after I when ordering motor on the left: i.e. KT45M 5IS H001
Replace first O after H with 2 if NPT pump.: i.e. KT45M 5IS H201

Orbital 100 cc.

Mod.	Volume		Pressure		Speed	Oil volume		Oil press.		Ordering Code
	L/min	Gpm	bar	p.s.i.	r.p.m.	L/min	Gpm	bar	p.s.i.	
KT45M	74	19.5	50	730	600	60	15.9	90	1310	KT45M5BI H001

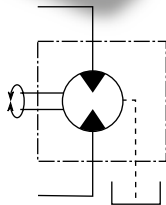
ZRPM1 Revolution counter



		Power supply	Ordering Code
Inductive proximity sensor, c/w female connector M12 4 pin, P67, field attachable, and ring nut reduction M18 x 1		12/24 VDC	ZRPM1

KF5M series

40HP

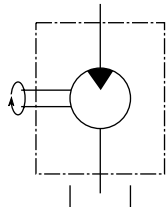


Motor comes standard on the right (see picture).
Add S after I when ordering motor on the left: i.e. KF5M5BIS H001
Replace first O after H with 2 if NPT pump.: i.e. KF5M9BIS H201

Orbital 100 cc.

Mod.	Volume		Pressure		Speed	Oil volume		Oil press.		Ordering Code
	L/min	Gpm	bar	p.s.i.	r.p.m.	L/min	Gpm	bar	p.s.i.	
KF5M5B	177	46.7	50	730	600	60	15.9	200	2900	KF5M5BI H001
KF5M9B	177	46.7	70	1020	600	60	15.9	280	4060	KF5M9BI H001

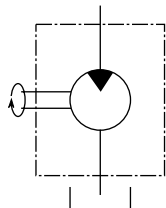
Orbital 120 cc.



Motor comes standard on the right (see picture).
Add S after I when ordering motor on the left: i.e. KF5M5BIS H002
Replace first O after H with 2 if NPT pump.: i.e. KF5M9BIS H202

Mod.	Volume		Pressure		Speed	Oil volume		Oil press.		Ordering Code
	L/min	Gpm	bar	p.s.i.	r.p.m.	L/min	Gpm	bar	p.s.i.	
KF5M5B	144	38.0	50	730	490	59	15.5	170	2470	KF5M5BI H002
KF5M9B	144	38.0	70	1020	490	59	15.5	240	3480	KF5M9BI H002

Orbital 200 cc.



Motor comes standard on the right (see picture).
Add S after I when ordering motor on the left: i.e. KF5M5BIS H003
Replace first O after H with 2 if NPT pump.: i.e. KF5M9BIS H203

Mod.	Volume		Pressure		Speed	Oil volume		Oil press.		Ordering Code
	L/min	Gpm	bar	p.s.i.	r.p.m.	L/min	Gpm	bar	p.s.i.	
KF5M5B	109	28.8	50	730	370	74	19.6	100	1450	KF5M5BI H003
KF5M9B	109	28.8	80	1160	370	74	19.6	160	2320	KF5M9BI H003

ZRPM1 Revolution counter

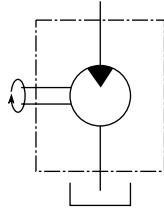
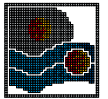


		Power supply	Ordering Code
Inductive proximity sensor, c/w female connector M12 4 pin, P67, field attachable, and ring nut reduction M18 x 1		12/24 VDC	ZRPM1

MF7M series

50HP

HY-PACK



Orbital 120 cc.

Mod.	Volume		Pressure		Speed r.p.m.	Gear ratio	Gear box Side	Gear box Angle	Oil volume		Oil press.	
	L/min	Gpm	bar	p.s.i.					L/min	Gpm	bar	p.s.i.
MF7M	203	53.6	50	730	490	2,238	Left (L) or Right (R)	L1/R1 L2/R2 L3/R3 L4/R4 L5/R5	59	15.5	240	3480
	242	63.9	40	580	490	1,875			59	15.5	230	3340

Codes Assembly Example: MF7M 2,238 G.R., G.B. left, angle 2, motor 120 cc

MF7M					2,238	Left	L2					120
-------------	--	--	--	--	--------------	-------------	-----------	--	--	--	--	------------

ZRPM1 Revolution counter

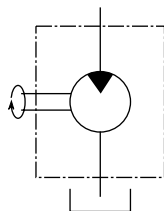


Inductive proximity sensor, c/w female connector M12 4 pin, P67, field attachable, and ring nut reduction M18 x 1

Power supply	Ordering Code
12/24 VDC	ZRPM1

MK9M series

80HP



Orbital 100 cc.

Mod.	Volume		Pressure		Speed r.p.m.	Gear ratio	Gear box Side	Gear box Angle	Oil volume		Oil press.	
	L/min	Gpm	bar	p.s.i.					L/min	Gpm	bar	p.s.i.
MK9M	399	105.4	35	510	770	2,65	Left (L) or Right (R)	L1/R1 L2/R2 L3/R3 L4/R4 L5/R5	77	20.3	240	3480

Codes Assembly Example: MK9M 2,65 G.R., G.B. left, angle 2, motor 100 cc

MK9M					2,65	Left	L2					100
-------------	--	--	--	--	-------------	-------------	-----------	--	--	--	--	------------

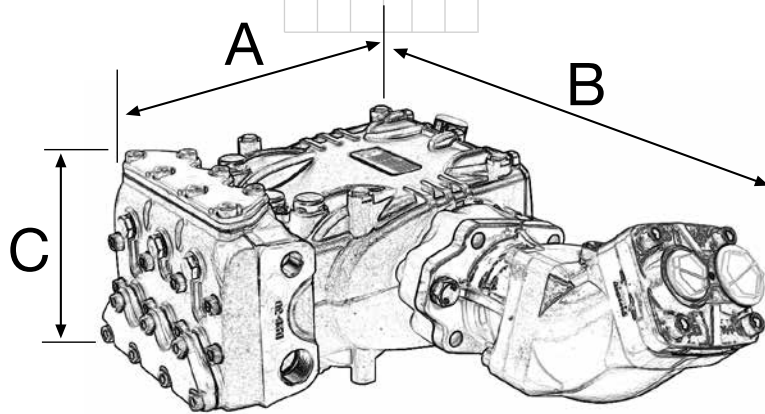
ZRPM1 Revolution counter



Inductive proximity sensor, c/w female connector M12 4 pin, P67, field attachable, and ring nut reduction M18 x 1

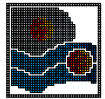
Power supply	Ordering Code
12/24 VDC	ZRPM1

OVERALL DIMENSIONS AND WEIGHTS

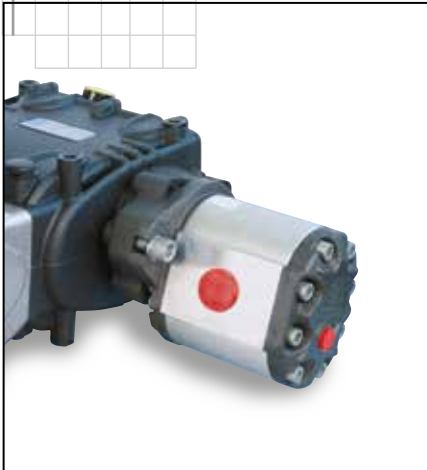


PUMP	MOTOR	A x B x C mm.	WEIGHT	
			kg	lbs
KE	GEAR 48	387 X 515 X 208	57	127
	PISTON 64	387 X 540 X 213	52	116
KTip	GEAR 48	405 X 515 X 214	61	136
	GEAR 53	405 X 442 X 214	50	112
	GEAR 62	405 X 446 X 214	50	112
	GEAR 70	405 X 453 X 214	51	113
	PISTON 64	405 X 540 X 219	56	125
KThp	GEAR 48	395 X 515 X 212	61	136
	GEAR 53	395 X 442 X 212	50	112
	GEAR 62	395 X 446 X 212	50	112
	GEAR 70	395 X 453 X 212	51	113
	PISTON 64	395 X 540 X 212	56	125
KV	GEAR 48	471 X 538 X 208	61	136
	PISTON 64	471 X 563 X 208	56	125
KF	GEAR 117	526 X 582 X 253	107	238
	PISTON 84	526 X 572 X 253	86	191
	PISTON 108	526 X 572 X 253	86	191
HF	GEAR 117	506 X 582 X 252	101	225
	PISTON 84	506 X 572 X 252	80	178
	PISTON 108	506 X 572 X 252	80	178
VHF	GEAR 117	607 X 599 X 252	101	225
	GEAR 184	607 X 624 X 252	106	236
	PISTON 108	607 X 589 X 252	80	178
	PISTON 130	607 X 601 X 252	83	185
KS	GEAR 117	545 X 582 X 252	133	296
	GEAR 184	582 X 607 X 252	138	307
	PISTON 108	582 X 572 X 252	112	249
	PISTON 130	582 X 584 X 252	115	256
HS	GEAR 117	545 X 582 X 252	116	258
	GEAR 184	545 X 572 X 252	121	269
	PISTON 108	545 X 572 X 252	95	211
	PISTON 130	545 X 584 X 252	98	218

PUMP	MOTOR	A x B x C mm.	WEIGHT	
			kg	lbs
VKH	GEAR 117	645 X 599 X 252	118	263
	GEAR 184	645 X 624 X 252	123	273
	PISTON 108	645 X 589 X 252	97	216
	PISTON 130	645 X 601 X 252	100	223
MWIp	GEAR 117	752 X 802 X 359	293	652
	GEAR 184	752 X 827 X 359	298	663
	PISTON 108	752 X 792 X 359	272	605
	PISTON 130	752 X 804 X 359	275	612
MWUp	GEAR 117	750 X 802 X 359	298	663
	GEAR 184	750 X 827 X 359	303	674
	PISTON 108	750 X 792 X 359	277	616
	PISTON 130	750 X 804 X 359	280	623
SM	GEAR 117	878 X 802 X 359	298	663
	PISTON 108	878 X 792 X 359	277	616
MKIp	GEAR 184	841 X 969 X 359	449	998
	PISTON 130	841 X 945 X 359	426	947
MKhp	GEAR 184	829 X 969 X 359	435	967
	PISTON 130	829 X 945 X 359	412	916
MF	GEAR 184	775 X 828 X 359	302	672
	PISTON 130	775 X 804 X 359	279	620
MKSIp	GEAR 184	841 X 969 X 359	449	998
	PISTON 130	841 X 945 X 359	426	947
MKShp	GEAR 184	829 X 969 X 359	435	967
	PISTON 130	829 X 945 X 359	412	916
KT45M	ORB 100	471 X 470 X 220	54	120
KF5M	ORB 100	597 X 501 X 288	83	185
	ORB 120	597 X 484 X 288	87	194
	ORB 200	597 X 488 X 288	88	196
MF7M	ORB 120	820 X 705 X 359	293	652
MK9M	ORB 100	901 X 863 X 411	413	918



MOTOR SPECS



MOTOR SPECS		GEAR 53 c.c.	GEAR 62 c.c.	GEAR 70 c.c.
Mounting flange		SAE B	SAE B	SAE B
Displacement	cm ³ / rev	53,0	62,7	70,5
Max.operating pressure	bar	220	190	180
Max.peak pressure	bar	250	220	200
Max.intermittent speed	r.p.m.	3000	2500	2500
Max.continuous speed	r.p.m.	2500	2100	2100
Min.speed @ max. pressure	r.p.m.	700	700	700
Max.pressure at discharge	bar	5	5	5
Operating viscosity range	cST	10 : 500	10 : 500	10 : 500
Optimal viscosity range		15 : 92	15 : 92	15 : 92
Start up max. viscosity		1300	1300	1300
Fluid temperature	°C	-25 : +80	-25 : +80	-25 : +80
Porting	IN	G 1"	G 1"	G 1"
	OUT	G 1"	G 1"	G 1"



MOTOR SPECS		GEAR 48c.c.	GEAR 117c.c.	GEAR 184c.c.
Mounting flange		SAE B	SAE C	SAE C
Displacement	cm ³ / rev	49,7	117,3	183,4
Max.operating pressure	bar	275	275	210
Max.peak pressure	bar	330	330	250
Max.intermittent speed	r.p.m.	3000	2750	2250
Max.continuous speed	r.p.m.	2400	2200	1800
Min.speed @ max. pressure	r.p.m.	600	600	600
Max.pressure at discharge	bar	5	5	5
Operating viscosity range	cST	10 : 500	10 : 500	10 : 500
Optimal viscosity range	cST	15 : 92	15 : 92	15 : 92
Start up max. viscosity	cST	1300	1300	1300
Fluid temperature	°C	-25 : +80	-25 : +80	-25 : +80
Porting	IN	1" 5/8 12 UN (SAE20)	1" 7/8 12 UN (SAE24)	2" 1/2 12 UN (SAE32)
	OUT	1" 5/8 12 UN (SAE20)	1" 7/8 12 UN (SAE24)	2" 1/2 12 UN (SAE32)



MOTOR SPECS		PISTON 64c.c.	PISTON 84c.c.	PISTON 108c.c.	PISTON 130c.c.
Mounting flange		SAE B	SAE C	SAE C	SAE C
Displacement	cm ³ /rev	64,1	84,4	107,7	130,1
Max.operating pressure	bar	270	370	370	310
Max.peak pressure	bar	300	400	400	350
Max.intermittent speed	r.p.m.	2500	2600	2600	2500
Max.continuous speed	r.p.m.	2000	2000	2000	2000
Min.speed @ max. pressure	r.p.m.	300	300	300	300
Max.pressure at discharge	bar	5	5	5	5
Operating viscosity range	cST	9 : 75	9 : 75	9 : 75	9 : 75
Optimal viscosity range	cST	15 : 46	15 : 46	15 : 46	15 : 46
Start up max. viscosity	cST	1000	1000	1000	1000
Fluid temperature	°C	-25 : +80	-25 : +80	-25 : +80	-25 : +80
Porting	IN	1" 5/16 12UN (SAE16)			
	OUT	1" 5/8 12UN (SAE16)	1" 5/8 12UN (SAE20)	1" 7/8 12UN (SAE24)	



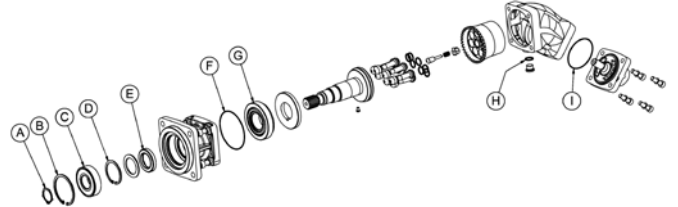
MOTOR SPECS		ORBIT 100c.c.	ORBIT 120c.c.	ORBIT 200c.c.
Mounting flange		SAE B	SAE C	SAE C
Displacement	cm ³ / rev	100	121	204
Max.operating pressure	bar	207	241	241
Max.peak pressure	bar	310	276	276
Max.intermittent speed	r.p.m.	800	490	370
Max.continuous speed	r.p.m.	745	360	300
Min.speed @ max. pressure	r.p.m.	17	8	3
Optimal viscosity range	cST	23 : 43	23 : 43	23 : 43
Max.fluid temperature	°C	85	85	85
Porting	IN	7/8" 14 UNF		
	OUT	7/8" 14 UNF		

SPARE PARTS KIT



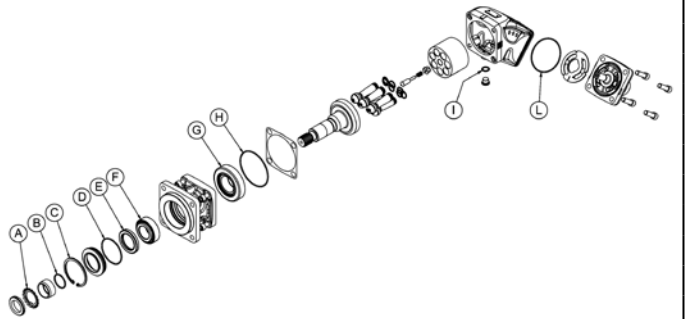
PISTON 64/84/108cc. SPARE PARTS KIT - ORDERING CODE - 34241801

Ref.	Description	Qt.
A	Seeger 35 K 983	1
B	Circlip 80i 7437	1
C	Bearing 6307 2RSR	1
D	Circlip 62i 7437	1
E	Seal TCHP4062	1
F	O'ring 2375	1
G	Bearing 31309	1
H	Copper washer	1
I	O'ring 2325	1



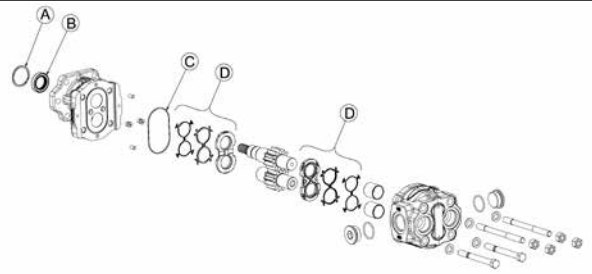
PISTON 130cc. SPARE PARTS KIT - ORDERING CODE - 34241901

Ref.	Description	Qt.
A	Washer	1
B	O'ring 3156	1
C	Circlip 85i 7437	1
D	O'ring 3300	1
E	Seal TCHP5072	1
F	Bearing 33108	1
G	Bearing T7FC 050	1
H	O'ring 3425	1
I	Copper washer	1
L	O'ring 3375	1



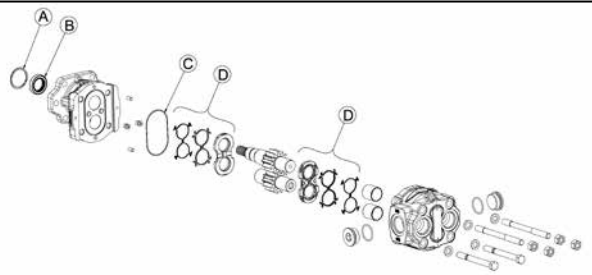
GEAR 48cc. SPARE PARTS KIT - ORDERING CODE - 34241601

Ref.	Description	Qt.
A	Spiral safety ring	1
B	Oil seal	1
C	Gasket	1
D	Thrust plate gasket	2



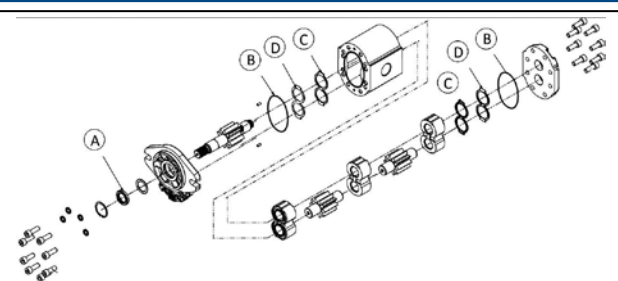
GEAR 117/184cc. SPARE PARTS KIT - ORDERING CODE - 34241701

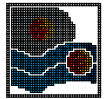
Ref.	Description	Qt.
A	Spiral safety ring	1
B	Oil seal	1
C	Gasket	1
D	Thrust plate gasket	2



GEAR 3GM 53 - 62 - 70 SPARE PARTS KIT - ORDERING CODE - 34036301

Ref.	Description	Qt.
A	Spiral safety ring	1
B	Oil seal	2
C	Gasket	2
D	Thrust plate gasket	2



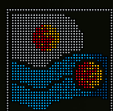


OIL FILTRATION

MOTOR	Operating Pressure		Contamination		Filtration
	bar	psi	NAS 1638	ISO 4406	μ
PISTON 64 - 84 - 108 - 130	≤ 200	≤ 2900	10	19/16	25
	< 300	< 3450	9	18/15	20
	≥ 300	≥ 3450	8	17/14	10
GEAR 48 - 117 - 184	≤ 200	≤ 2900	10	19/16	25
	< 300	< 3450	9	18/15	20
	≥ 300	≥ 3450	8	17/14	10
GEAR 53 - 62 - 70	≤ 150	≤ 2180	10	21/19/16	25
	>150	> 2180	9	20/18/15	20
ORBITAL 100 - 120 - 200	≥ 300	≥ 3450	8	17/14	10

USEFUL TIPS

Hydraulic Measures			Useful Formulas		Conversion factors	
Q	Flow	lpm/gpm	$Q = V \cdot n / 1000 \cdot n_t$	lpm	1 lpm	0.2641 US gpm
M	Torque	Nm	$Q = V \cdot n / 231 \cdot n_t$	gpm	1Nm	8.851 in - lbs
P	Power	HP/Kw	$M = \Delta p \cdot V \cdot n_t / 62,8$	Nm	1Nm	0.7375 ft - lbs
V	Displacement	cc/rev	$M = \Delta p \cdot V \cdot n_t / 2 \cdot 3.14$	lfb.in	1N	0.2248 lbs
n	Speed	Rpm	$P = \Delta p \cdot V \cdot n \cdot n_t / 395934$	HP	1HP	1.36 Kw
Δp	Pressure	bar/psi	$V = M \cdot 62,8 / \Delta p \cdot n_t$	cc/rev	1 cc/rev	0.061 in ³ / rev
n _t	Overall efficiency		$\Delta p = M \cdot 62,8 / V \cdot n_t$	bar	1 bar	14.5 psi
					1 mm	0.0394 in
					1 kg	2.205 lbs



Pratissoli

A brand of



INTERPUMP GROUP

**AZIENDA CON SISTEMA
DI GESTIONE QUALITÀ
CERTIFICATO DA DNV
=ISO 9001=**

PRATISSOLI a brand of INTERPUMP GROUP S.P.A.

Via E. Fermi, 25 42049 S. Ilario (RE) Italy - Tel. +39 0522 904311 Fax +39 0522 904444

E-mail: info@pratissolipompe.com - <http://www.pratissolipompe.com>

INTERPUMP GROUP S.P.A.: C.C.I.A.A. R.E.A. N.204185

PART.IVA IT 01682900350 - REG.IMPRESSE R.E. - C.F.11666900151 - REG.A.E.E.: IT08020000000780