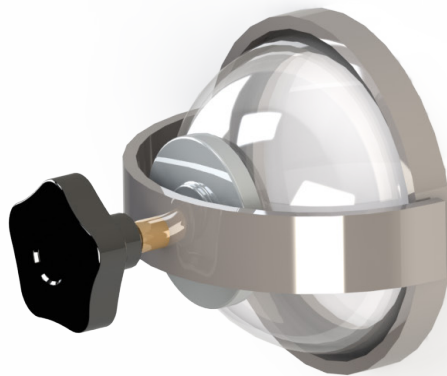


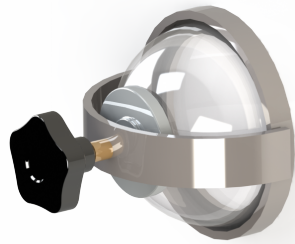


**TECHNICAL SHEET**

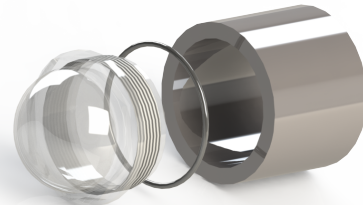


**SIGHTGLASS LEVEL INDICATORS**

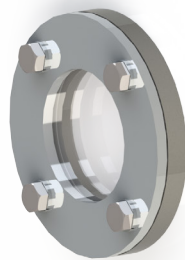
## Description



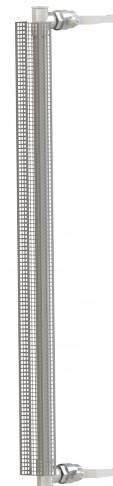
**1**



**2**



**3**



**4**

**(1) 5" glass level indicator kit**

**(2) 2" plastic level indicator kit**

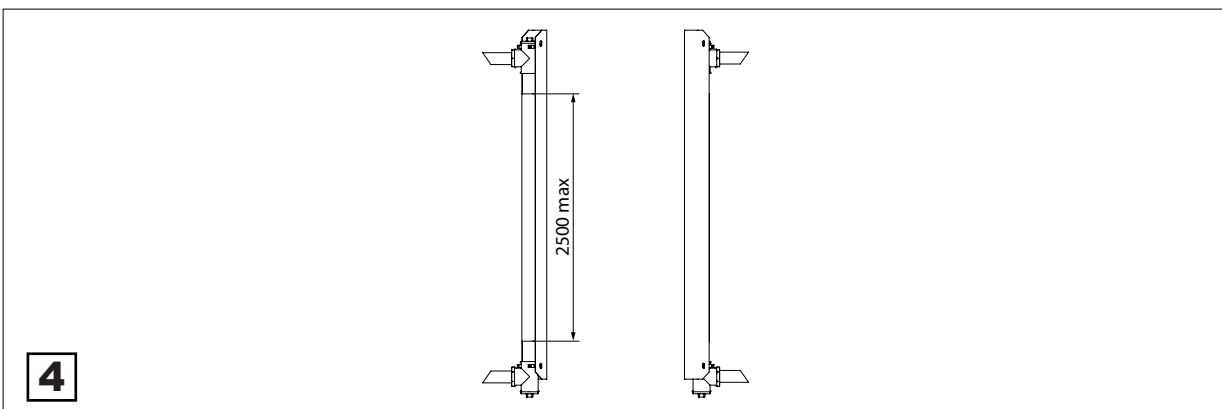
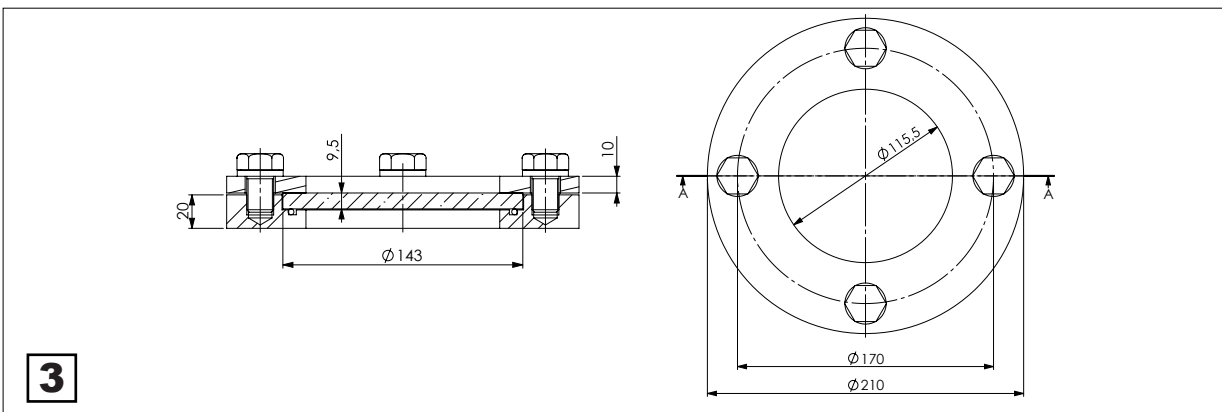
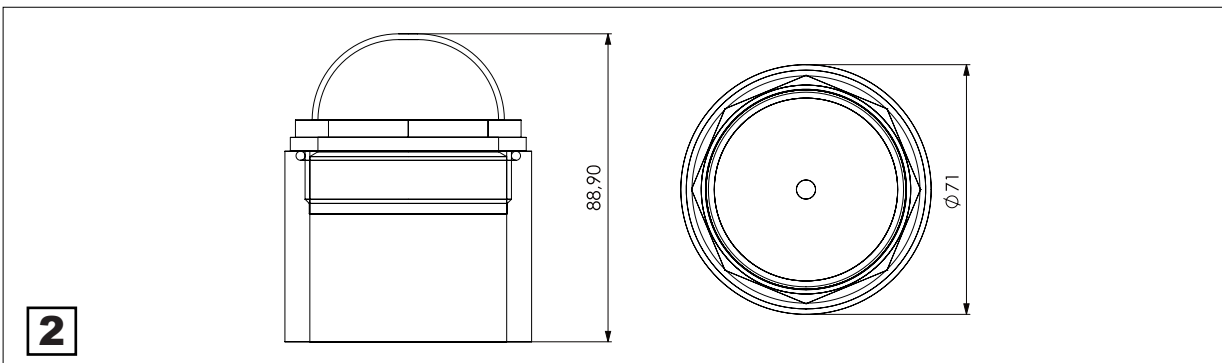
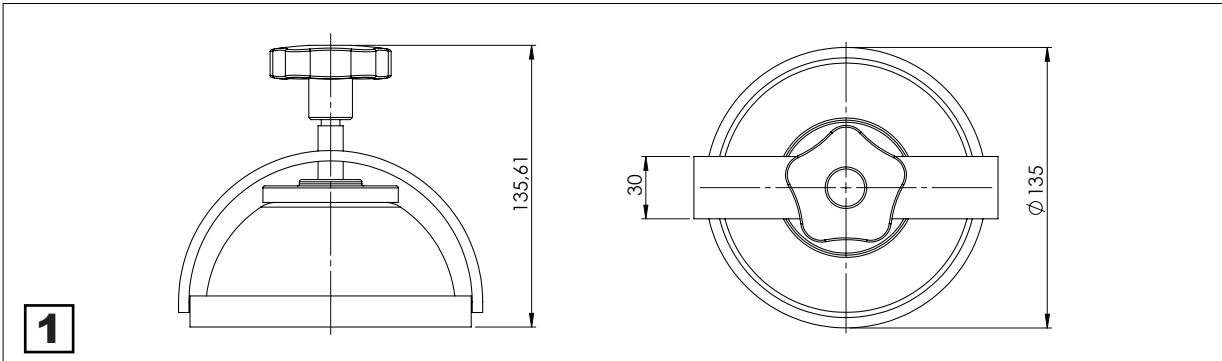
**(3) 4" oblong 4 bar level indicator kit**

2" - 4" -5" glass high resistant plastic and glass level indicator with welding tank support, complete kit for 1 bar - 14,5 psi to 4 bar - 58 psi working pressure. Carbon steel or Stainless Steel support available. Easy to disassemble for cleaning.

**(4) diam. 50-1 1/2" and diam. 76 -3" tube level indicator kit**

1 - 1/2" or 3" column level indicator for easy application with plastic pipe coupling, T elbows for easy cleaning with Steel welding tank pipes. 1 bar - 14,5 psi working pressure.

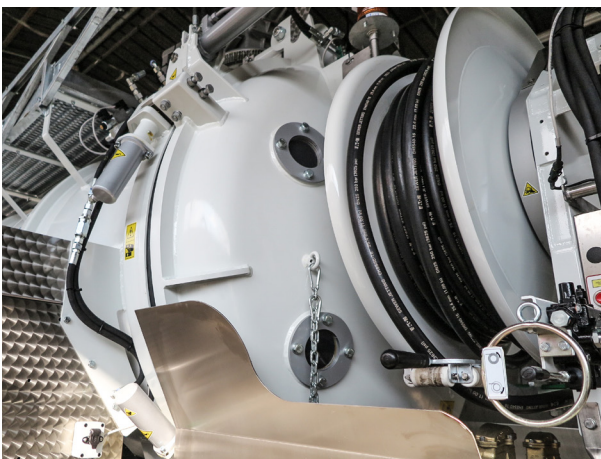
**Dimensions**

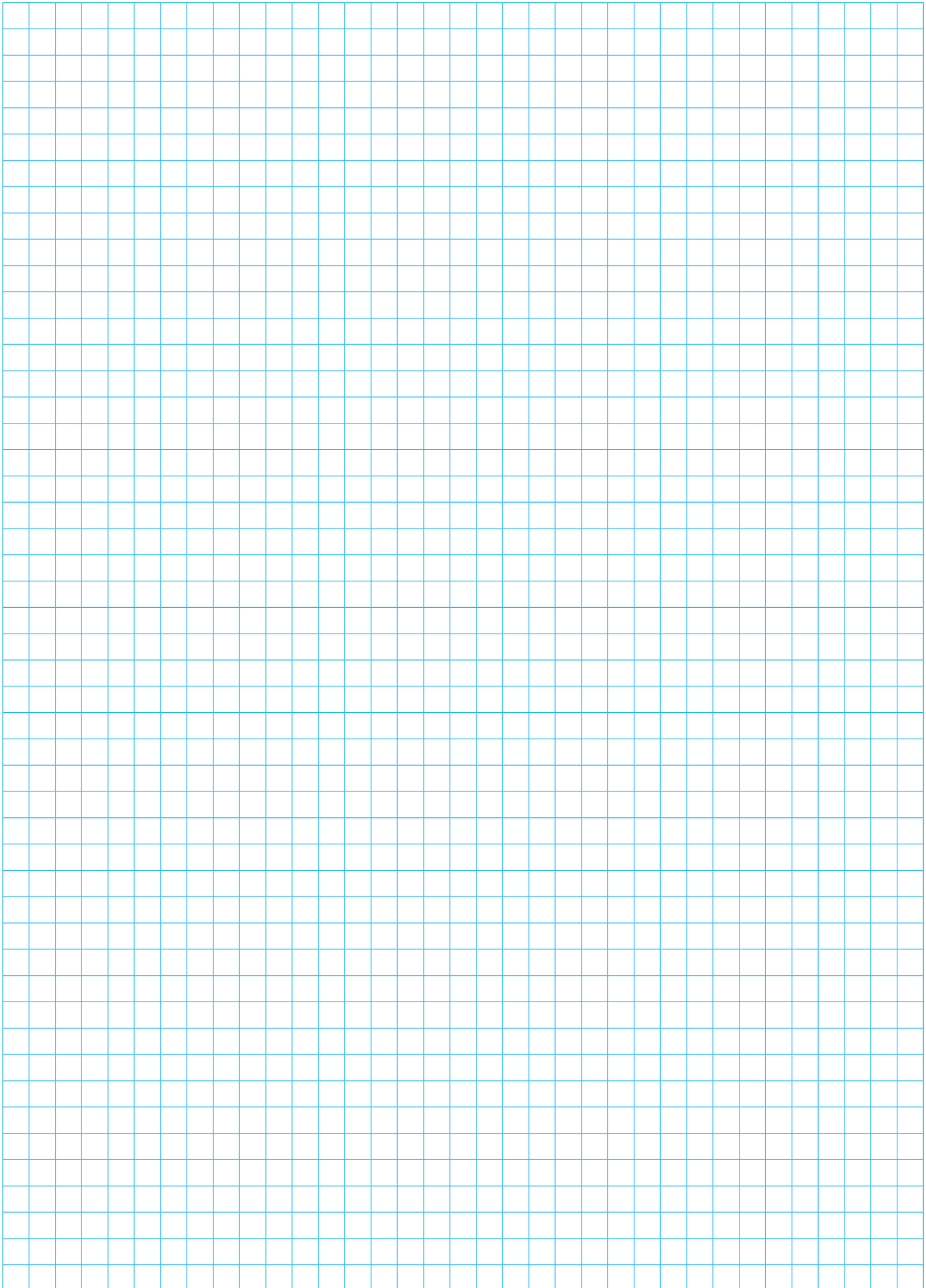


## Versions

description	code
Carbon steel 5" glass level indicator kit	6.880000000-2C
Stainless Steel 5" glass level indicator kit	6.880000130-2C
Carbon Steel 2" plastic level indicator kit	6.880000300-1
Carbon steel 4" Oblò level indicator kit	6.880000320-2C
Stainless Steel 4" Oblò level indicator kit	6.880000330-2C
1 1/2" Sight tube level indicator with couplings and welding tank pipes	6.880000120-2C
3" Sight tube level indicator with couplings and welding tank pipes	6.880000141-2C

## Examples of application







# **MORO KAISER** **COMPONENTS**

**MORO KAISER S.R.L.**

Via Pontebbana, 16  
33080 FIUME VENETO (PN) ITALY

Tel. 0434 951.211

Fax: 0434 957.786

[infomoro@morokaiser.it](mailto:infomoro@morokaiser.it)