

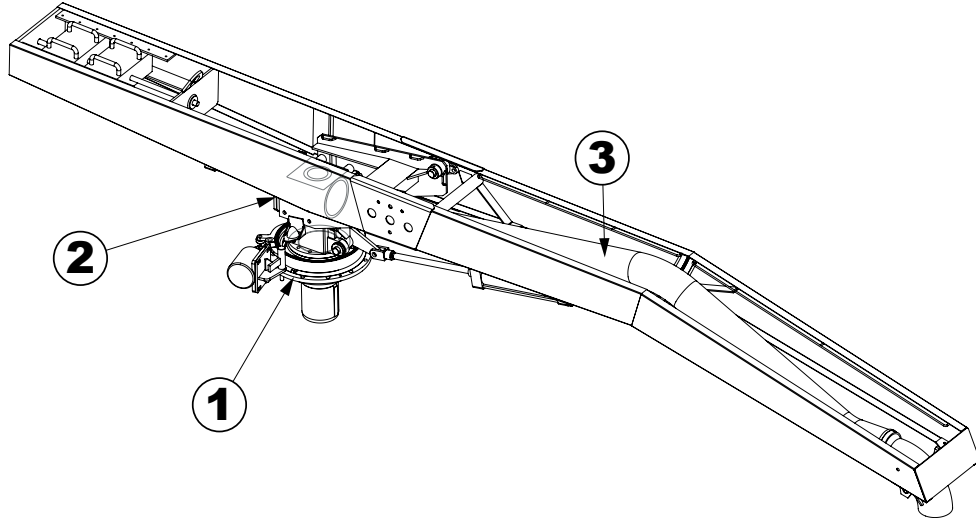


**TECHNICAL SHEET**



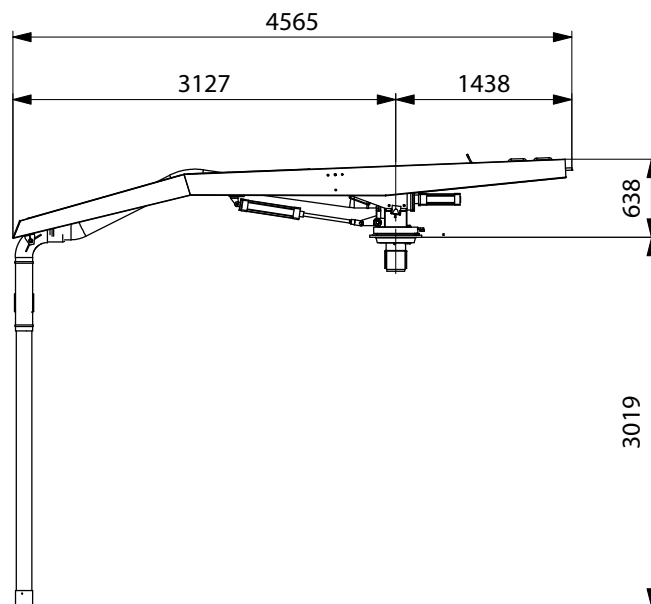
**BALANCED SUCTION BOOM**

## Description



The suction boom starts the vacuum line, it is the first component which comes into contact with the sludge material and it is the more complex part of the system and of the air flow covered during the entire path from the suction mouth to the tank. The boom is made of a centre-plate (1), a pneumatic controlled throttle valve (2) and a 5" rubber hose (3). The lifting movement of the suction boom is made possible by pneumatic cylinders, while the rotation movement is manual and it includes a pneumatic stop brake. The arm is counter balanced on the rear side in order to make the parking and the self-levelling movements very easy. The whole pneumatic movement plant of the suction boom relies on an accurate design and a detailed study of the ergonomics of each component to guarantee precision in the movements, speed of use and minimum operator fatigue.

## Dimensions



## Technical data

parameter	value
Working pressure	+1,5 bar rel.
Hose diameter	Ø100 mm
Weight	432 kg

## Main features

- Top mounted suction boom.
- Complete with centre-plate, suction trap and pneumatic controlled throttle valve.
- Manual rotation with pneumatic stop brake.
- Pneumatic up-down movements of the arm; the arm is counter-balanced on the rear side to aid parking and self levelling.
- Lever control panel mounted on the galvanised suction end pipe, with controls for boom open/close valve, boom lift, parking brake and vacuum pump inversion. All the controls are pneumatic (no electric cables).
- Vacuum meter.
- Terminal suction pipe in hot galvanised steel.
- Parking of the suction boom can be made of steel and cut to length to prevent the overfilling of the rear sludge tank.

## Versions

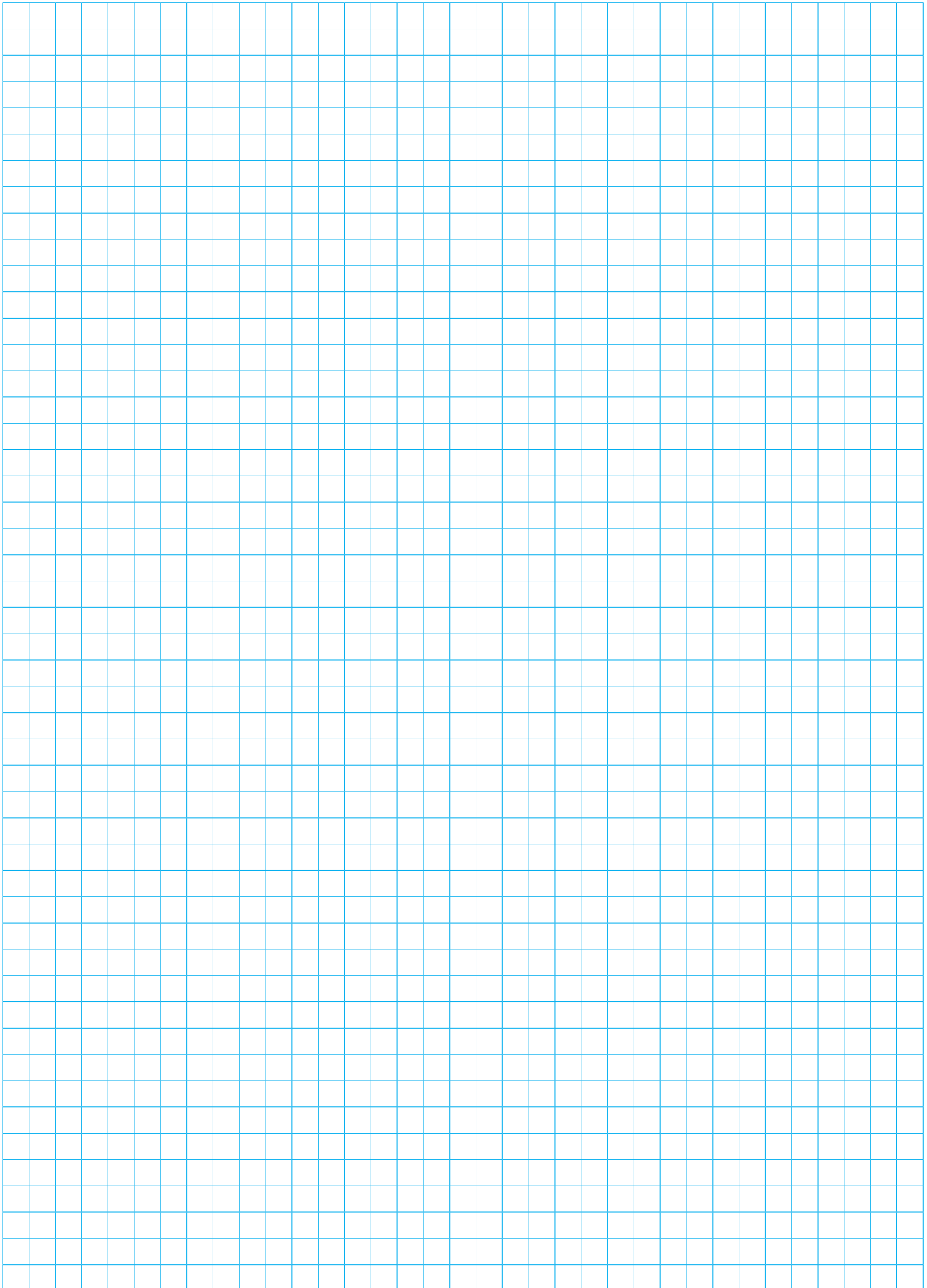
code	description
6.860300190-1	Counter balanced 5" suction boom

## Accessories

code	description
6.928006010-1	12V-24V led working light kit

Examples of application







# **MORO KAISER** **COMPONENTS**

**MORO KAISER S.R.L.**

Via Pontebbana, 16  
33080 FIUME VENETO (PN) ITALY

Tel. 0434 951.211

Fax: 0434 957.786

[infomoro@morokaiser.it](mailto:infomoro@morokaiser.it)